

**NOTICE!!**

**These documents have been scanned!**

**Do not place un-scanned documents beneath this notice!**

**Do not remove this notice from this file!**

GPO Jacket No. 560-102  
Print Order 61540  
Rise Business Services, LLC  
Job=AZ15 7/11/2019



Box Number= AZ15154



Claim Begin-End: AMC451946-AMC451946

**1 Initial Receipt**



AZ15154-5

AMC451761-AMC452292

**United States Department of the Interior**  
**Bureau of Land Management**  
 DIV OF LANDS, MINRLS & ENERGY  
 ONE N CENTRAL AVE  
 PHOENIX, AZ 85004 -4427  
 Phone: 602-417-9200

Receipt

No: 4223548

<b>Transaction #:</b> 4338777	
<b>Date of Transaction:</b> 07/31/2018	
CUSTOMER:	
BRONCO CREEK EXPLORATION INC. 1815 E WINSETT ST TUCSON, AZ 85719-6547 US	

**ENTERED**  
 AUG 02 2018  
 BY: RIAM

LINE #	QTY	DESCRIPTION	REMARKS	UNIT PRICE	TOTAL
1	1.00	LOCATABLE MINERALS / MINING CLAIMS-NEW, UNADJUD, ONE OR MORE AUTH NOS / NEW MINING CLAIM PROCESSING FEE <b>CASES: AMC451946/\$20.00</b>		- n/a -	20.00
2	1.00	LOCATABLE MINERALS / MINING CLAIMS-NEW, UNADJUD, ONE OR MORE AUTH NOS / NEW MINING CLAIMS LOCATION FEE <b>CASES: AMC451946/\$37.00</b>		- n/a -	37.00
3	1.00	LOCATABLE MINERALS / MINING CLAIMS-NEW, UNADJUD, ONE OR MORE AUTH NOS / NEW MINING CLAIMS MAINTENANCE FEE <b>CASES: AMC451946/\$155.00</b>		- n/a -	155.00
<b>TOTAL:</b>					<b>\$212.00</b>

PAYMENT INFORMATION			
1	AMOUNT:	212.00	POSTMARKED: N/A
	TYPE:	CHECK	RECEIVED: 07/30/2018
	CHECK NO:	3503	
	NAME:	BRONCO CREEK EXPLORATION INC. 1815 E WINSETT ST TUCSON AZ 85719-6547 US	

REMARKS

This receipt was generated by the automated BLM Collections and Billing System and is a paper representation of a portion of the official electronic record contained therein.



**NOTICE!!**

**These documents have been scanned!**

**Do not place un-scanned documents beneath this notice!**

**Do not remove this notice from this file!**

GPO Jacket No. 560-102  
Print Order 61540  
Rise Business Services, LLC  
Job=AZ15 7/11/2019



Box Number= AZ15154



Claim Begin-End: AMC451946-AMC451946

**2 Correspondence**



AZ15154-5

AMC451761-AMC452292

**NO  
DOCUMENTS  
FOUND**

NO DOCUMENTS FOUND  
NO DOCUMENTS FOUND



**NOTICE!!**

**These documents have been scanned!**

**Do not place un-scanned documents beneath this notice!**

**Do not remove this notice from this file!**

GPO Jacket No. 560-102  
Print Order 61540  
Rise Business Services, LLC  
Job=AZ15 7/11/2019



Box Number= AZ15154



Claim Begin-End: AMC451946-AMC451946

**3 Transfers**



AZ15154-5

AMC451761-AMC452292

**NO  
DOCUMENTS  
FOUND**

NO DOCUMENTS FOUND  
NO DOCUMENTS FOUND



**NOTICE!!**

**These documents have been scanned!**

**Do not place un-scanned documents beneath this notice!**

**Do not remove this notice from this file!**

GPO Jacket No. 560-102  
Print Order 61540  
Rise Business Services, LLC  
Job=AZ15 7/11/2019



Box Number= AZ15154



Claim Begin-End: AMC451946-AMC451946

**4 Annual Filings**



AZ15154-5

AMC451761-AMC452292

Lead File Numbers (maintenance fee payments – receipt number 4240670) Bronco Creek  
Exploration

AMC373611

AMC374429

AMC379989

AMC383484

AMC392740

AMC398487

AMC400517

AMC407981

AMC410492

AMC411139

AMC416276

AMC416711

AMC423718

AMC424321

AMC425575

AMC426840

AMC427738

AMC428784

AMC430079

AMC434024

AMC441622

AMC442857

AMC443988

AMC444264

AMC451946





Bronco Creek Exploration Inc.  
1815 East Winsett Street  
Tucson, Arizona 85719-6547

Tel: (520) 624-4153  
Fax: (520) 624-4192  
www.broncocreek.com

After recording, return to:  
Bronco Creek Exploration, Inc.  
1815 East Winsett Street  
Tucson, AZ 85719-6547

August 5, 2018

Bureau of Land Management  
One North Central Avenue, Suite 800  
Phoenix, AZ 85004-4427  
(602) 417-9200

RECEIVED  
BLM AZ STATE OFFICE  
2018 AUG 20 P 12:56  
PHOENIX, ARIZONA

**Re: Maintenance Fee Payment for Lode Claims**

Please accept the following 2019 maintenance fee payment documents enclosed on behalf of the claimant, Bronco Creek Exploration, Inc., of 1815 East Winsett Street, Tucson, Arizona 85719:

- Exhibit A- List of 152 mining claims and AMC numbers to be included in this maintenance fee payment.
- Check # 3529 in the amount of \$23,560 (\$155.00 x 152 unpatented mining claims located in Gila County, Arizona)

If there are any questions or problems, please contact me at (520) 624-4153, ccreel@broncocreek.com or at the address above. Thank you very much for your assistance.

Sincerely,

Chris Creel  
Land Manager

ENTERED  
AUG 28 2018  
BY:

# 4240670

# Exhibit A

Federal Unpatented Claims

Project: Sleeping Beauty

Gila  
Arizona

Line No.	BLM Serial No.	Claim Name	County Recorder	Twنشp	Range	Section
			Fee # / Doc ID #			
1	AMC426866	SLB 27	2014-001422	1N,2N	14E	1;36
2	AMC426867	SLB 28	2014-001423	1N,2N	14E	1;36
3	AMC426868	SLB 29	2014-001424	1N,2N	14E	1;36
4	AMC426869	SLB 30	2014-001425, 2014-003486	1N,2N	14E	1;36
5	AMC426870	SLB 31	2014-001426	1N,2N	14E	1;36
6	AMC426871	SLB 32	2014-001427	1N,2N	14E	1;36
7	AMC426872	SLB 33	2014-001428	1N,2N	14E	1,2;36
8	AMC426873	SLB 34	2014-001429, 2014-008645	1N,2N	14E	2;35,36
9	AMC426874	SLB 35	2014-001430, 2014-008646	1N,2N	14E	2;35
10	AMC426875	SLB 36	2014-001431, 2014-008647	1N,2N	14E	2;35
11	AMC426876	SLB 37	2014-001432, 2014-008648	1N,2N	14E	2;35
12	AMC426877	SLB 38	2014-001433	1N,2N	14E	2;35
13	AMC426878	SLB 39	2014-001434	1N,2N	14E	2;35
14	AMC426879	SLB 40	2014-001435	1N,2N	14E	2;35
15	AMC426880	SLB 41	2014-001436	1N,2N	14E	2;35
16	AMC426881	SLB 42	2014-001437	1N	14E	1
17	AMC426882	SLB 43	2014-001438	1N	14E	1
18	AMC426883	SLB 44	2014-001439	1N	14E	1
19	AMC426884	SLB 45	2014-001440	1N	14E	1
20	AMC426885	SLB 46	2014-001441	1N	14E	1
21	AMC426886	SLB 47	2014-001442	1N	14E	1
22	AMC426887	SLB 48	2014-001443	1N	14E	1
23	AMC426888	SLB 49	2014-001444, 2014-008649	1N	14E	1
24	AMC426889	SLB 50	2014-001445, 2014-008650	1N	14E	1
25	AMC426890	SLB 51	2014-001446, 2014-008651	1N	14E	1
26	AMC426891	SLB 52	2014-001447, 2014-008652	1N	14E	1
27	AMC426892	SLB 53	2014-001448	1N	14E	1
28	AMC426893	SLB 54	2014-001449	1N	14E	1
29	AMC426894	SLB 55	2014-001450	1N	14E	1
30	AMC426895	SLB 56	2014-001451	1N	14E	1
31	AMC426896	SLB 57	2014-001452	1N	14E	1
32	AMC426897	SLB 58	2014-001453	1N	14E	1
33	AMC426898	SLB 59	2014-001454	1N	14E	1
34	AMC426899	SLB 60	2014-001455	1N	14E	1
35	AMC426900	SLB 61	2014-001456	1N	14E	1
36	AMC426901	SLB 62	2014-001457	1N	14E	1
37	AMC426902	SLB 63	2014-001458	1N	14E	1
38	AMC426903	SLB 64	2014-001459	1N	14E	1
39	AMC426904	SLB 65	2014-001460	1N	14E	1
40	AMC426905	SLB 66	2014-001461	1N	14E	1

2018 AUG 20 P 12:56  
 BLM RECEIVED  
 AT STATE OFFICE  
 PHOENIX, ARIZONA



Federal Unpatented Claims

Project: Sleeping Beauty

Gila  
Arizona

Line No.	BLM Serial No.	Claim Name	County Recorder	Townshp	Range	Section
			Fee # / Doc ID #			
41	AMC426906	SLB 67	2014-001462	1N	14E	1
42	AMC426907	SLB 68	2014-001463	1N	14E	1
43	AMC426908	SLB 69	2014-001464	1N	14E	1,2
44	AMC426909	SLB 70	2014-001465	1N	14E	2
45	AMC426910	SLB 71	2014-001466	1N	14E	2
46	AMC426911	SLB 72	2014-001467	1N	14E	2
47	AMC426912	SLB 73	2014-001468	1N	14E	2
48	AMC426913	SLB 74	2014-001469	1N	14E	2
49	AMC426914	SLB 75	2014-001470	1N	14E	2
50	AMC426915	SLB 76	2014-001471	1N	14E	2
51	AMC426916	SLB 77	2014-001472	1N	14E	2
52	AMC426917	SLB 78	2014-001473	1N	14E	2,3
53	AMC426918	SLB 79	2014-001474	1N	14E	3
54	AMC426919	SLB 80	2014-001475	1N	14E	3
55	AMC426920	SLB 81	2014-001476	1N	14E	3
56	AMC426921	SLB 82	2014-001477	1N	14E	3
57	AMC426922	SLB 83	2014-001478	1N	14E	3
58	AMC426923	SLB 84	2014-001479	1N	14E	3
59	AMC426924	SLB 85	2014-001480	1N	14E	3
60	AMC426925	SLB 86	2014-001481	1N	14E	1,12
61	AMC426926	SLB 87	2014-001482	1N	14E	1,12
62	AMC426927	SLB 88	2014-001483	1N	14E	1,12
63	AMC426928	SLB 89	2014-001484	1N	14E	1,12
64	AMC426929	SLB 90	2014-001485	1N	14E	1,12
65	AMC426930	SLB 91	2014-001486	1N	14E	1,12
66	AMC426931	SLB 92	2014-001487	1N	14E	1,12
67	AMC426932	SLB 93	2014-001488	1N	14E	1,12
68	AMC426933	SLB 94	2014-001489	1N	14E	1,2,11,12
69	AMC426934	SLB 95	2014-001490	1N	14E	2,11
70	AMC426935	SLB 96	2014-001491	1N	14E	2,11
71	AMC426936	SLB 97	2014-001492	1N	14E	2,11
72	AMC426937	SLB 98	2014-001493	1N	14E	2,11
73	AMC426938	SLB 99	2014-001494	1N	14E	2,11
74	AMC426939	SLB 100	2014-001495, 2014-008653	1N	14E	2,11
75	AMC426940	SLB 101	2014-001496, 2014-008654	1N	14E	2,3,10,11
76	AMC426941	SLB 102	2014-001497, 2014-008655	1N	14E	3,10
77	AMC426942	SLB 103	2014-001498	1N	14E	3,10
78	AMC426943	SLB 104	2014-001499	1N	14E	3,10
79	AMC426944	SLB 105	2014-001500	1N	14E	3,10
80	AMC426945	SLB 106	2014-001501	1N	14E	3,10
81	AMC426946	SLB 107	2014-001502	1N	14E	3,10
82	AMC426947	SLB 108	2014-001503	1N	14E	3,10

PHOENIX, ARIZONA  
 2018 AUG 20 PM 12:51  
 RECEIVED  
 BLM AT STATE OFFICE

Federal Unpatented Claims

Project: Sleeping Beauty

Gila  
Arizona

Line No.	BLM Serial No.	Claim Name	County Recorder	Twنشp	Range	Section
			Fee # / Doc ID #			
83	AMC426948	SLB 109	2014-001504	1N	14E	3,4,9,10
84	AMC426949	SLB 110	2014-001505	1N	14E	4,9
85	AMC426950	SLB 111	2014-001506	1N	14E	11
86	AMC426951	SLB 112	2014-001507	1N	14E	11
87	AMC426952	SLB 113	2014-001508	1N	14E	11
88	AMC426953	SLB 114	2014-001509	1N	14E	11
89	AMC426954	SLB 115	2014-001510	1N	14E	11
90	AMC426955	SLB 116	2014-001511	1N	14E	11
91	AMC426956	SLB 117	2014-001512	1N	14E	11
92	AMC426957	SLB 118	2014-001513	1N	14E	10,11
93	AMC426958	SLB 119	2014-001514	1N	14E	10
94	AMC426959	SLB 120	2014-001515	1N	14E	10
95	AMC426960	SLB 121	2014-001516	1N	14E	10
96	AMC426961	SLB 122	2014-001517	1N	14E	10
97	AMC426962	SLB 123	2014-001518	1N	14E	10
98	AMC426963	SLB 124	2014-001519	1N	14E	10
99	AMC426964	SLB 125	2014-001520	1N	14E	10
100	AMC426965	SLB 126	2014-001521	1N	14E	9,10
101	AMC426966	SLB 127	2014-001522	1N	14E	9
102	AMC426967	SLB 128	2014-001523	1N	14E	9,11
103	AMC426968	SLB 129	2014-001524	1N	14E	10
104	AMC426969	SLB 130	2014-001525	1N	14E	10
105	AMC426970	SLB 131	2014-001526, 2014-003487, 2014-006395	1N	14E	10
106	AMC426971	SLB 132	2014-001527	1N	14E	10
107	AMC426972	SLB 133	2014-001528	1N	14E	10
108	AMC426973	SLB 134	2014-001529	1N	14E	10
109	AMC426974	SLB 135	2014-001530	1N	14E	9,10
110	AMC426975	SLB 136	2014-001531, 2014-003488, 2014-006396	1N	14E	1
111	AMC426976	SLB 137	2014-001532, 2014-003489, 2014-006397	1N	14E	1
112	AMC427741	CF 4	2014-003495	2N	14E	36
113	AMC427742	CF 5	2014-003496	2N	14E	36
114	AMC427743	CF 6	2014-003497	2N	14E	36
115	AMC427744	CF 7	2014-003498	1N,2N	14E	1,36
116	AMC427747	CF 10	2014-003501	2N	14E,15E	36,31
117	AMC427748	CF 11	2014-003502	2N	14E,15E	36,31
118	AMC427749	CF 12	2014-003503	2N	14E,15E	36,31
119	AMC427750	CF 13	2014-003504	2N	14E,15E	36,31
120	AMC427751	CF 14	2014-003505	2N	14E,15E	36,31
121	AMC427752	CF 15	2014-003506	2N	14E,15E	36,31

2018 AUG 20 P 12:57  
 PHOENIX, ARIZONA

RECEIVED  
 BLM AZ STATE OFFICE

Federal Unpatented Claims

Project: Sleeping Beauty

Gila  
Arizona

Line No.	BLM Serial No.	Claim Name	County Recorder	Townshp	Range	Section
			Fee # / Doc ID #			
122	AMC427753	CF 16	2014-003507	1N,2N	14E,15E;14E,15E	1;6;36;31
123	AMC427754	CF 17	2014-003508	1N	14E,15E	1;6
124	AMC427755	CF 18	2014-003509	1N	14E,15E	1;6
125	AMC427756	CF 19	2014-003510	1N	14E	1
126	AMC427757	CF 20	2014-003511	1N	14E	1
127	AMC427758	CF 21	2014-003512	1N	14E,15E	1;6
128	AMC427759	CF 22	2014-003513	1N	14E,15E	1;6
129	AMC427760	CF 23	2014-003514	1N	14E,15E	1;6
130	AMC427761	CF 24	2014-003515	1N	14E,15E	1;6
131	AMC427762	CF 25	2014-003516	1N	15E	6
132	AMC427763	CF 26	2014-003517	1N,2N	15E	6;31
133	AMC427764	CF 27	2014-003518	1N,2N	15E	6;31
134	AMC427765	CF 28	2014-003519	1N	15E	6
135	AMC427766	CF 29	2014-003520	1N	15E	6
136	AMC427767	CF 30	2014-003521	1N	15E	6
137	AMC427768	CF 31	2014-003522	1N	15E	6
138	AMC427769	CF 32	2014-003523	1N	15E	6
139	AMC427770	CF 33	2014-003524	1N	15E	6
140	AMC427771	CF 34	2014-003525	1N	15E	6
141	AMC427772	CF 35	2014-003526	1N	15E	5,6
142	AMC427773	CF 36	2014-003527	1N	15E	5
143	AMC427774	CF 37	2014-003528	1N	15E	5
144	AMC427775	CF 38	2014-003529	1N	15E	5
145	AMC427776	CF 39	2014-003530	1N	15E	5
146	AMC427777	CF 40	2014-003531	1N	15E	5
147	AMC427778	CF 41	2014-003532	1N	15E	5
148	AMC427779	CF 42	2014-003533	1N	15E	5
149	AMC427780	CF 43	2014-003534	1N	15E	5
150	AMC427781	CF 44	2014-003535	1N	15E	5
151	AMC427782	CF 45	2014-003536	1N	15E	5
152	AMC427783	CF 46	2014-003537	1N	15E	5

Total Claims 152

RECEIVED  
 BLM AZ STATE OFFICE  
 2018 AUG 20 P 12: 57  
 PHOENIX, ARIZONA





Bronco Creek Exploration Inc.  
1815 East Winsett Street  
Tucson, Arizona 85719-6547

Tel: (520) 624-4153  
Fax: (520) 624-4192  
www.broncocreek.com

After recording, return to:  
Bronco Creek Exploration, Inc.  
1815 East Winsett Street  
Tucson, AZ 85719-6547

August 5, 2018

Bureau of Land Management  
One North Central Avenue, Suite 800  
Phoenix, AZ 85004-4427  
(602) 417-9200

RECEIVED  
BLM AZ STATE OFFICE  
2018 AUG 20 P 12:56  
PHOENIX, ARIZONA

**Re: Maintenance Fee Payment for Lode Claims**

Please accept the following 2019 maintenance fee payment documents enclosed on behalf of the claimant, Bronco Creek Exploration, Inc., of 1815 East Winsett Street, Tucson, Arizona 85719:

- Exhibit A- List of 95 mining claims and AMC numbers to be included in this maintenance fee payment.
- Check # 3528 in the amount of \$14,725 (\$155.00 x 95 unpatented mining claims located in Pinal County, Arizona)

If there are any questions or problems, please contact me at (520) 624-4153, ccreel@broncocreek.com or at the address above. Thank you very much for your assistance.

Sincerely,

Chris Creel  
Land Manager

#4240670

# Exhibit A

Federal Unpatented Claims

Project: Ripsey West

Pinal  
Arizona

Line No.	BLM Serial No.	Claim Name	County Recorder	Townshp	Range	Section
			Fee # / Doc ID #			
1	AMC443988	RW 1	2017-025230	5S	13E	29,30,31,32
2	AMC443989	RW 2	2017-025231	5S	13E	29,32
3	AMC443990	RW 3	2017-025232	5S	13E	29,32
4	AMC443991	RW 4	2017-025233	5S	13E	28,29,32,33
5	AMC443992	RW 5	2017-025234	5S	13E	29,30
6	AMC443993	RW 6	2017-025235	5S	13E	29
7	AMC443994	RW 7	2017-025236	5S	13E	29
8	AMC443995	RW 8	2017-025237	5S	13E	29
9	AMC443996	RW 9	2017-025238	5S	13E	29
10	AMC443997	RW 10	2017-025239	5S	13E	29
11	AMC443998	RW 11	2017-025240	5S	13E	29
12	AMC443999	RW 12	2017-025241	5S	13E	29
13	AMC444000	RW 13	2017-025242	5S	13E	28,29
14	AMC444001	RW 14	2017-025243	5S	13E	29,30
15	AMC444002	RW 15	2017-025244	5S	13E	29
16	AMC444003	RW 16	2017-025245	5S	13E	29
17	AMC444004	RW 17	2017-025246	5S	13E	29
18	AMC444005	RW 18	2017-025247	5S	13E	29
19	AMC444006	RW 19	2017-025248	5S	13E	29
20	AMC444007	RW 20	2017-025249	5S	13E	29
21	AMC444008	RW 21	2017-025250	5S	13E	29
22	AMC444009	RW 22	2017-025251	5S	13E	28,29
23	AMC444010	RW 23	2017-025252	5S	13E	29,30
24	AMC444011	RW 24	2017-025253	5S	13E	29
25	AMC444012	RW 25	2017-025254	5S	13E	29
26	AMC444013	RW 26	2017-025255	5S	13E	29
27	AMC444014	RW 27	2017-025256	5S	13E	29
28	AMC444015	RW 28	2017-025257	5S	13E	29
29	AMC444016	RW 29	2017-025258	5S	13E	29
30	AMC444017	RW 30	2017-025259	5S	13E	29
31	AMC444018	RW 31	2017-025260	5S	13E	28,29
32	AMC444019	RW 32	2017-025261	5S	13E	19,20,29,30
33	AMC444020	RW 33	2017-025262	5S	13E	20,29
34	AMC444021	RW 34	2017-025263	5S	13E	20,29
35	AMC444022	RW 35	2017-025264	5S	13E	20,29
36	AMC444023	RW 36	2017-025265	5S	13E	20,29
37	AMC444024	RW 37	2017-025266	5S	13E	20,29
38	AMC444025	RW 38	2017-025267	5S	13E	20,29
39	AMC444026	RW 39	2017-025268	5S	13E	20,29
40	AMC444027	RW 40	2017-025269	5S	13E	20,21,28,29

PHOENIX, ARIZONA  
 2018 AUG 20 P 12: 56

RECEIVED  
 BLM AZ STATE OFFICE

Federal Unpatented Claims

Project: Ripsey West

Pinal  
Arizona

Line No.	BLM Serial No.	Claim Name	County Recorder		Townshp	Range	Section
			Fee # /	Doc ID #			
41	AMC444028	RW 41	2017-025270		5S	13E	21,28
42	AMC444029	RW 42	2017-025271		5S	13E	21,28
43	AMC444030	RW 43	2017-025272		5S	13E	21,28
44	AMC444031	RW 44	2017-025273		5S	13E	21,28
45	AMC444032	RW 45	2017-025274		5S	13E	19,20
46	AMC444033	RW 46	2017-025275		5S	13E	20
47	AMC444034	RW 47	2017-025276		5S	13E	20
48	AMC444035	RW 48	2017-025277		5S	13E	20
49	AMC444036	RW 49	2017-025278		5S	13E	20
50	AMC444037	RW 50	2017-025279		5S	13E	20
51	AMC444038	RW 51	2017-025280		5S	13E	20
52	AMC444039	RW 52	2017-025281		5S	13E	20
53	AMC444040	RW 53	2017-025282		5S	13E	20,21
54	AMC444041	RW 54	2017-025283		5S	13E	21
55	AMC444042	RW 55	2017-025284		5S	13E	21
56	AMC444043	RW 56	2017-025285		5S	13E	21
57	AMC444044	RW 57	2017-025286		5S	13E	21
58	AMC444045	RW 58	2017-025287		5S	13E	19,20
59	AMC444046	RW 59	2017-025288		5S	13E	20
60	AMC444047	RW 60	2017-025289		5S	13E	20
61	AMC444048	RW 61	2017-025290		5S	13E	20
62	AMC444049	RW 62	2017-025291		5S	13E	20
63	AMC444050	RW 63	2017-025292		5S	13E	20
64	AMC444051	RW 64	2017-025293		5S	13E	20,21
65	AMC444052	RW 65	2017-025294		5S	13E	21
66	AMC444053	RW 66	2017-025295		5S	13E	21
67	AMC444054	RW 67	2017-025296		5S	13E	21
68	AMC444055	RW 68	2017-025297		5S	13E	21
69	AMC444056	RW 69	2017-025298		5S	13E	21
70	AMC444057	RW 70	2017-025299		5S	13E	21
71	AMC444058	RW 71	2017-025300		5S	13E	17,18,19,20
72	AMC444059	RW 72	2017-025301		5S	13E	17,20
73	AMC444060	RW 73	2017-025302		5S	13E	17,20
74	AMC444061	RW 74	2017-025303		5S	13E	17,20
75	AMC444062	RW 75	2017-025304		5S	13E	17,20
76	AMC444063	RW 76	2017-025305		5S	13E	17,20
77	AMC444064	RW 77	2017-025306		5S	13E	17,20
78	AMC444065	RW 78	2017-025307		5S	13E	17,20
79	AMC444066	RW 79	2017-025308		5S	13E	16,17,20,21
80	AMC444067	RW 80	2017-025309		5S	13E	16,21
81	AMC444068	RW 81	2017-025310		5S	13E	16,21
82	AMC444069	RW 82	2017-025311		5S	13E	16,21

2018 AUG 20 P 12: 56  
 PHOENIX, ARIZONA  
 BLM AZ STATE OFFICE



Federal Unpatented Claims

Project: Ripsey West

Pinal  
Arizona

Line No.	BLM Serial No.	Claim Name	County Recorder	Townshp	Range	Section
			Fee # / Doc ID #			
83	AMC444070	RW 83	2017-025312	5S	13E	16,21
84	AMC444071	RW 84	2017-025313	5S	13E	17
85	AMC444072	RW 85	2017-025314	5S	13E	17
86	AMC444073	RW 86	2017-025315	5S	13E	16,17
87	AMC444074	RW 87	2017-025316	5S	13E	17
88	AMC444075	RW 88	2017-025317	5S	13E	17
89	AMC444076	RW 89	2017-025318	5S	13E	16,17
90	AMC444077	RW 90	2017-025319	5S	13E	17
91	AMC444078	RW 91	2017-025320	5S	13E	17
92	AMC444079	RW 92	2017-025321	5S	13E	16,17
93	AMC444080	RW 93	2017-025322	5S	13E	8,17
94	AMC444081	RW 94	2017-025323	5S	13E	8,17
95	AMC444082	RW 95	2017-025324	5S	13E	8,9,16,17

Total Claims 95

PHOENIX, ARIZONA

2018 AUG 20 P 12: 56

RECEIVED  
BLM AZ STATE OFFICE



Bronco Creek Exploration Inc.  
1815 East Winsett Street  
Tucson, Arizona 85719-6547

Tel: (520) 624-4153  
Fax: (520) 624-4192  
www.broncocreek.com

After recording, return to:  
Bronco Creek Exploration, Inc.  
1815 East Winsett Street  
Tucson, AZ 85719-6547

August 5, 2018

Bureau of Land Management  
One North Central Avenue, Suite 800  
Phoenix, AZ 85004-4427  
(602) 417-9200

RECEIVED  
BLM AZ STATE OFFICE  
2018 AUG 20 P 12:55  
PHOENIX, ARIZONA

**Re: Maintenance Fee Payment for Lode Claims**

Please accept the following 2019 maintenance fee payment documents enclosed on behalf of the claimant, Bronco Creek Exploration, Inc., of 1815 East Winsett Street, Tucson, Arizona 85719:

- Exhibit A- List of 192 mining claims and AMC numbers to be included in this maintenance fee payment.
- Check # 3527 in the amount of \$29,760 (\$155.00 x 192 unpatented mining claims located in Pinal County, Arizona)

If there are any questions or problems, please contact me at (520) 624-4153, ccreel@broncocreek.com or at the address above. Thank you very much for your assistance.

Sincerely,

Chris Creel  
Land Manager

#4240670

# Exhibit A

Federal Unpatented Claims

Project: Red Top

Pinal  
Arizona

Line No.	BLM Serial No.	Claim Name	County Recorder	Townshp	Range	Section
			Fee # / Doc ID #			
1	AMC416725	FE 15	2012-063842	1S	12E	11
2	AMC416726	FE 16	2012-063843	1S	12E	2,11
3	AMC416727	FE 17	2012-063844	1S	12E	2
4	AMC416728	FE 18	2012-063845	1S	12E	2
5	AMC416729	FE 19	2012-063846	1S	12E	2
6	AMC416730	FE 20	2012-063847	1S	12E	2
7	AMC416731	FE 21	2012-063848	1S	12E	2
8	AMC416732	FE 22	2012-063849	1S	12E	2
9	AMC416733	FE 23	2012-063850	1S	12E	10,11
10	AMC416734	FE 24	2012-063851	1S	12E	2,3,10,11
11	AMC416735	FE 25	2012-063852	1S	12E	2,3
12	AMC416736	FE 26	2012-063853	1S	12E	2,3
13	AMC416737	FE 27	2012-063854	1S	12E	2,3
14	AMC416738	FE 28	2012-063855	1S	12E	2,3
15	AMC416739	FE 29	2012-063856	1S	12E	2,3
16	AMC416740	FE 30	2012-063857	1S	12E	2,3
17	AMC416741	FE 31	2012-063858	1S	12E	2,3
18	AMC416742	FE 32	2012-063859	1N,1S	12E	34,2,3
19	AMC416743	FE 33	2012-063860	1S	12E	10
20	AMC416744	FE 34	2012-063861	1S	12E	10
21	AMC416745	FE 35	2012-063862	1S	12E	3
22	AMC416746	FE 36	2012-063863	1S	12E	3
23	AMC416747	FE 37	2012-063864	1S	12E	3
24	AMC416748	FE 38	2012-063865	1S	12E	3
25	AMC416749	FE 39	2012-063866	1S	12E	3
26	AMC416750	FE 40	2012-063867	1S	12E	3
27	AMC416751	FE 41	2012-063868	1S	12E	3
28	AMC416752	FE 42	2012-063869	1N,1S	12E	33;3
29	AMC416753	FE 43	2012-063870	1S	12E	10
30	AMC416754	FE 44	2012-063871	1S	12E	3,10
31	AMC416755	FE 45	2012-063872	1S	12E	3
32	AMC416756	FE 46	2012-063873	1S	12E	3
33	AMC416757	FE 47	2012-063874	1S	12E	3
34	AMC416758	FE 48	2012-063875	1S	12E	3
35	AMC416759	FE 49	2012-063876	1S	12E	3
36	AMC416760	FE 50	2012-063877	1S	12E	3
37	AMC416761	FE 51	2012-063878	1S	12E	3
38	AMC416762	FE 52	2012-063879	1N,1S	12E	33;3
39	AMC416763	FE 53	2012-063880	1N	12E	33
40	AMC416764	FE 54	2012-063881	1N	12E	33

2018 AUG 20 12:55  
 RECEIVED  
 BLM AZ STATE OFFICE  
 PHOENIX, ARIZONA

Federal Unpatented Claims

Project: Red Top

Pinal  
Arizona

Line No.	BLM Serial No.	Claim Name	County Recorder		Twنشp	Range	Section
			Fee # / Doc ID #				
41	AMC416765	FE 55	2012-063882		1N	12E	33
42	AMC416766	FE 56	2012-063883		1N	12E	33
43	AMC416767	FE 57	2012-063884		1N	12E	33
44	AMC416768	FE 58	2012-063885		1S	12E	10
45	AMC416769	FE 59	2012-063886		1S	12E	3,10
46	AMC416770	FE 60	2012-063887		1S	12E	3
47	AMC416771	FE 61	2012-063888		1S	12E	3
48	AMC416772	FE 62	2012-063889		1S	12E	3
49	AMC416773	FE 63	2012-063890		1S	12E	3
50	AMC416774	FE 64	2012-063891		1S	12E	3
51	AMC416775	FE 65	2012-063892		1S	12E	3
52	AMC416776	FE 66	2012-063893		1S	12E	3
53	AMC416777	FE 67	2012-063894		1N,1S	12E	33,3
54	AMC416778	FE 68	2012-063895		1N	12E	33
55	AMC416779	FE 69	2012-063896		1N	12E	33
56	AMC416780	FE 70	2012-063897		1N	12E	33
57	AMC416781	FE 71	2012-063898		1N	12E	33
58	AMC416782	FE 72	2012-063899		1N	12E	33
59	AMC416785	FE 75	2012-063902		1S	12E	9,10
60	AMC416786	FE 76	2012-063903		1S	12E	3,4,9,10
61	AMC416787	FE 77	2012-063904		1S	12E	3,4
62	AMC416788	FE 78	2012-063905		1S	12E	3,4
63	AMC416789	FE 79	2012-063906		1S	12E	3,4
64	AMC416790	FE 80	2012-063907		1S	12E	3,4
65	AMC416791	FE 81	2012-063908		1S	12E	3,4
66	AMC416792	FE 82	2012-063909		1S	12E	3,4
67	AMC416793	FE 83	2012-063910		1S	12E	3,4
68	AMC416794	FE 84	2012-063911		1N,1S	12E	3,33,3,4
69	AMC416795	FE 85	2012-063912		1N	12E	32,33
70	AMC416796	FE 86	2012-063913		1N	12E	32,33
71	AMC416797	FE 87	2012-063914		1N	12E	32,33
72	AMC416798	FE 88	2012-063915		1N	12E	32,33
73	AMC416799	FE 89	2012-063916		1N	12E	32,33
74	AMC416802	FE 92	2012-063919		1S	12E	9
75	AMC416803	FE 93	2012-063920		1S	12E	4,9
76	AMC416804	FE 94	2012-063921		1S	12E	4
77	AMC416805	FE 95	2012-063922		1S	12E	4
78	AMC416806	FE 96	2012-063923		1S	12E	4
79	AMC416807	FE 97	2012-063924		1S	12E	4
80	AMC416808	FE 98	2012-063925		1S	12E	4
81	AMC416809	FE 99	2012-063926		1S	12E	4
82	AMC416810	FE 100	2012-063927		1S	12E	4

2018 AUG 20 P 12:55  
 PHOENIX, ARIZONA  
 PINAL COUNTY RECORDER  
 STATE OFFICE



Federal Unpatented Claims

Project: Red Top

Pinal  
Arizona

Line No.	BLM Serial No.	Claim Name	County Recorder		Townshp	Range	Section
			Fee # /	Doc ID #			
83	AMC416811	FE 101	2012-063928		1N,1S	12E	32,4
84	AMC416812	FE 102	2012-063929		1N	12E	32
85	AMC416813	FE 103	2012-063930		1N	12E	32
86	AMC416814	FE 104	2012-063931		1N	12E	32
87	AMC416815	FE 105	2012-063932		1N	12E	32
88	AMC416816	FE 106	2012-063933		1N	12E	32
89	AMC416819	FE 109	2012-063936		1S	12E	9
90	AMC416820	FE 110	2012-063937		1S	12E	4,9
91	AMC416821	FE 111	2012-063938		1S	12E	4
92	AMC416822	FE 112	2012-063939		1S	12E	4
93	AMC416823	FE 113	2012-063940		1S	12E	4
94	AMC416824	FE 114	2012-063941		1S	12E	4
95	AMC416825	FE 115	2012-063942		1S	12E	4
96	AMC416826	FE 116	2012-063943		1S	12E	4
97	AMC416827	FE 117	2012-063944		1S	12E	4
98	AMC416828	FE 118	2012-063945		1N,1S	12E	32,4
99	AMC416829	FE 119	2012-063946		1N	12E	32
100	AMC416830	FE 120	2012-063947		1N	12E	32
101	AMC416831	FE 121	2012-063948		1N	12E	32
102	AMC416832	FE 122	2012-063949		1N	12E	32
103	AMC416833	FE 123	2012-063950		1N	12E	32
104	AMC416836	FE 126	2012-063953		1S	12E	32
105	AMC416837	FE 127	2012-063954		1S	12E	32
106	AMC416838	FE 128	2012-063955		1S	12E	32
107	AMC416839	FE 129	2012-063956		1S	12E	32
108	AMC416840	FE 130	2012-063957		1S	12E	32
109	AMC416841	FE 131	2012-063958		1S	12E	32
110	AMC416842	FE 132	2012-063959		1S	12E	32
111	AMC416843	FE 133	2012-063960		1S	12E	32
112	AMC416844	FE 134	2012-063961		1S	12E	32
113	AMC416845	FE 135	2012-063962		1N,1S	12E	32,4,5
114	AMC416846	FE 136	2012-063963		1N	12E	32
115	AMC416847	FE 137	2012-063964		1N	12E	32
116	AMC416848	FE 138	2012-063965		1N	12E	32
117	AMC416849	FE 139	2012-063966		1N	12E	32
118	AMC416850	FE 140	2012-063967		1N	12E	32
119	AMC416855	FE 145	2012-063972		1N,1S	12E	33,34,3
120	AMC416856	FE 146	2012-063973		1N,1S	12E	34,3
121	AMC423718	FE 1	2013-055083		1S	12E	11,12
122	AMC423719	FE 2	2013-055084		1S	12E	1,2,11,12
123	AMC423720	FE 3	2013-055085		1S	12E	1,2
124	AMC423721	FE 4	2013-055086		1S	12E	1,2

2018 AUG 20 P 12: 55  
 PHOENIX, ARIZONA  
 BLM AZ STATE OFFICE

Federal Unpatented Claims

Project: Red Top

Pinal  
Arizona

Line No.	BLM Serial No.	Claim Name	County Recorder		Twنشp	Range	Section
			Fee # / Doc ID #				
125	AMC423722	FE 5	2013-055087		1S	12E	1,2
126	AMC423723	FE 6	2013-055088		1S	12E	1,2
127	AMC423724	FE 7	2013-055089		1S	12E	1,2
128	AMC423725	FE 8	2013-055090		1S	12E	11
129	AMC423726	FE 9	2013-055091		1S	12E	2,11
130	AMC423727	FE 10	2013-055092		1S	12E	2
131	AMC423728	FE 11	2013-055093		1S	12E	2
132	AMC423729	FE 12	2013-055094		1S	12E	2
133	AMC423730	FE 13	2013-055095		1S	12E	2
134	AMC423731	FE 14	2013-055096		1S	12E	2
135	AMC423732	FE 73	2013-055097		1N	12E	33
136	AMC423733	FE 74	2013-055098		1N	12E	33
137	AMC423734	FE 90	2013-055099		1N	12E	32,33
138	AMC423735	FE 91	2013-055100		1N	12E	32,33
139	AMC423736	FE 107	2013-055101		1N	12E	32
140	AMC423737	FE 108	2013-055102		1N	12E	32
141	AMC423738	FE 124	2013-055103		1N	12E	32
142	AMC423739	FE 125	2013-055104		1N	12E	32
143	AMC423740	FE 141	2013-055105		1N	12E	32
144	AMC423741	FE 142	2013-055106		1N	12E	32
145	AMC423742	FE 143	2013-055107		1N	12E	32
146	AMC423743	FE 144	2013-055108		1N	12E	32
147	AMC423744	FE 147	2013-055109		1S	12E	32
148	AMC423745	FE 148	2013-055110		1S	12E	32
149	AMC428784	FE 149	2014-040544		1N	12E	33
150	AMC428785	FE 150	2014-040545		1N	12E	28,33
151	AMC428786	FE 151	2014-040546		1N	12E	28
152	AMC428787	FE 152	2014-040547		1N	12E	28
153	AMC428788	FE 153	2014-040548		1N	12E	28
154	AMC428789	FE 154	2014-040549		1N	12E	28
155	AMC428790	FE 155	2014-040550		1N	12E	28
156	AMC428791	FE 156	2014-040551		1N	12E	28
157	AMC428792	FE 157	2014-040552		1N	12E	33
158	AMC428793	FE 158	2014-040553		1N	12E	28,33
159	AMC428794	FE 159	2014-040554		1N	12E	28
160	AMC428795	FE 160	2014-040555		1N	12E	28
161	AMC428796	FE 161	2014-040556		1N	12E	28
162	AMC428797	FE 162	2014-040557		1N	12E	28
163	AMC428798	FE 163	2014-040558		1N	12E	28
164	AMC428799	FE 164	2014-040559		1N	12E	28
165	AMC428800	FE 165	2014-040560		1N	12E	28,29
166	AMC428801	FE 166	2014-040561		1N	12E	29

2018 AUG 20 P 12: 55  
 PHOENIX, ARIZONA  
 BLM AZ STATE OFFICE  
 RECEIVED

Federal Unpatented Claims

Project: Red Top

Pinal  
Arizona

Line No.	BLM Serial No.	Claim Name	County Recorder	Twنشp	Range	Section
			Fee # / Doc ID #			
167	AMC428802	FE 167	2014-040562	1N	12E	29
168	AMC428803	FE 168	2014-040563	1N	12E	29
169	AMC428804	FE 169	2014-040564	1N	12E	29
170	AMC428805	FE 170	2014-040565	1N	12E	29
171	AMC428806	FE 171	2014-040566	1N	12E	29
172	AMC428807	FE 172	2014-040567	1N	12E	29
173	AMC428808	FE 173	2014-040568	1N	12E	29,30
174	AMC428809	FE 174	2014-040569	1N	12E	28,29
175	AMC428810	FE 175	2014-040570	1N	12E	29
176	AMC428811	FE 176	2014-040571	1N	12E	29
177	AMC428812	FE 177	2014-040572	1N	12E	29
178	AMC428813	FE 178	2014-040573	1N	12E	29
179	AMC428814	FE 179	2014-040574	1N	12E	29
180	AMC428815	FE 180	2014-040575	1N	12E	29
181	AMC428816	FE 181	2014-040576	1N	12E	29
182	AMC428817	FE 182	2014-040577	1N	12E	29,30
183	AMC428818	FE 183	2014-040578	1N	12E	28,29
184	AMC428819	FE 184	2014-040579	1N	12E	29
185	AMC428820	FE 185	2014-040580	1N	12E	29
186	AMC428821	FE 186	2014-040581	1N	12E	29
187	AMC428822	FE 187	2014-040582	1N	12E	29
188	AMC428823	FE 188	2014-040583	1N	12E	29
189	AMC428824	FE 189	2014-040584	1N	12E	29
190	AMC428825	FE 190	2014-040585	1N	12E	29
191	AMC428826	FE 191	2014-040586	1N	12E	29,30
192	AMC428827	FE 192	2014-040587	1N	12E	29

Total Claims 192

RECEIVED  
 BLM AZ STAFF OFFICE  
 2018 AUG 20 P 12:55  
 PHOENIX, ARIZONA



Bronco Creek Exploration Inc.  
1815 East Winsett Street  
Tucson, Arizona 85719-6547

Tel: (520) 624-4153  
Fax: (520) 624-4192  
www.broncocreek.com

After recording, return to:  
Bronco Creek Exploration, Inc.  
1815 East Winsett Street  
Tucson, AZ 85719-6547

August 5, 2018

Bureau of Land Management  
One North Central Avenue, Suite 800  
Phoenix, AZ 85004-4427  
(602) 417-9200

RECEIVED  
BLM AZ STATE OFFICE  
2018 AUG 20 P 12:54  
PHOENIX, ARIZONA

**Re: Maintenance Fee Payment for Lode Claims**

Please accept the following 2019 maintenance fee payment documents enclosed on behalf of the claimant, Bronco Creek Exploration, Inc., of 1815 East Winsett Street, Tucson, Arizona 85719:

- Exhibit A- List of 305 mining claims and AMC numbers to be included in this maintenance fee payment.
- Check # 3526 in the amount of \$47,275 (\$155.00 x 305 unpatented mining claims located in Greenlee County, Arizona)

If there are any questions or problems, please contact me at (520) 624-4153, ccreel@broncocreek.com or at the address above. Thank you very much for your assistance.

Sincerely,

Chris Creel  
Land Manager

# 4240670



# Exhibit A

Federal Unpatented Claims

Project: Midnight Juniper

Greenlee  
Arizona

Line No.	BLM Serial No.	Claim Name	County Recorder		Twنشp	Range	Section
			Fee # / Doc ID #				
1	AMC444264	MJ 1	2017-00392		3S	28E	1
2	AMC444265	MJ 2	2017-00393		3S	28E	1
3	AMC444266	MJ 3	2017-00394		3S	28E	1
4	AMC444267	MJ 4	2017-00395		3S	28E	1
5	AMC444268	MJ 5	2017-00396		3S	28E	1
6	AMC444269	MJ 6	2017-00397		3S	28E	1
7	AMC444270	MJ 7	2017-00398		3S	28E	1
8	AMC444271	MJ 8	2017-00399		3S	28E	1
9	AMC444272	MJ 9	2017-00400		3S	28E	1
10	AMC444273	MJ 10	2017-00401		3S	28E	1
11	AMC444274	MJ 11	2017-00402		3S	28E	1
12	AMC444275	MJ 12	2017-00403		3S	28E,29E	1;6
13	AMC444276	MJ 13	2017-00404		3S	29E	6
14	AMC444277	MJ 14	2017-00405		3S	29E	6
15	AMC444278	MJ 15	2017-00406		3S	29E	6
16	AMC444279	MJ 16	2017-00407		3S	29E	6
17	AMC444280	MJ 17	2017-00408		3S	29E	6
18	AMC444281	MJ 18	2017-00409		3S	29E	6
19	AMC444282	MJ 19	2017-00410		3S	29E	6
20	AMC444283	MJ 20	2017-00411		3S	29E	6
21	AMC444284	MJ 21	2017-00412		3S	29E	5,6
22	AMC444285	MJ 22	2017-00413		3S	29E	5
23	AMC444286	MJ 23	2017-00414		3S	29E	5
24	AMC444287	MJ 24	2017-00415		3S	29E	5
25	AMC444288	MJ 25	2017-00416		3S	29E	5
26	AMC444289	MJ 30	2017-00417		3S	28E	1
27	AMC444290	MJ 31	2017-00418		3S	28E	1
28	AMC444291	MJ 32	2017-00419		3S	28E	1
29	AMC444292	MJ 33	2017-00420		3S	28E	1
30	AMC444293	MJ 34	2017-00421		3S	28E	1
31	AMC444294	MJ 35	2017-00422		3S	28E	1
32	AMC444295	MJ 36	2017-00423		3S	28E	1
33	AMC444296	MJ 37	2017-00424		3S	28E	1
34	AMC444297	MJ 38	2017-00425		3S	28E	1
35	AMC444298	MJ 39	2017-00426		3S	28E	1
36	AMC444299	MJ 40	2017-00427		3S	28E	1
37	AMC444300	MJ 41	2017-00428		3S	28E,29E	1;6
38	AMC444301	MJ 42	2017-00429		3S	29E	6
39	AMC444302	MJ 43	2017-00430		3S	29E	6
40	AMC444303	MJ 44	2017-00431		3S	29E	6

2018 AUG 20 P 12: 54  
 PHOENIX, ARIZONA  
 RECEIVED  
 BLM AZ STATE OFFICE

Federal Unpatented Claims

Project: Midnight Juniper

Greenlee  
Arizona

Line No.	BLM Serial No.	Claim Name	County Recorder	Twنشp	Range	Section
			Fee # / Doc ID #			
41	AMC444304	MJ 45	2017-00432	3S	29E	6
42	AMC444305	MJ 46	2017-00433	3S	29E	6
43	AMC444306	MJ 47	2017-00434	3S	29E	6
44	AMC444307	MJ 48	2017-00435	3S	29E	6
45	AMC444308	MJ 49	2017-00436	3S	29E	6
46	AMC444309	MJ 50	2017-00437	3S	29E	6
47	AMC444310	MJ 51	2017-00438	3S	29E	5,6
48	AMC444311	MJ 52	2017-00439	3S	29E	5
49	AMC444312	MJ 53	2017-00440	3S	29E	5
50	AMC444313	MJ 54	2017-00441	3S	29E	5
51	AMC444314	MJ 59	2017-00442	3S	29E	5
52	AMC444315	MJ 60	2017-00443	3S	28E	1
53	AMC444316	MJ 61	2017-00444	3S	28E	1
54	AMC444317	MJ 62	2017-00445	3S	28E	1
55	AMC444318	MJ 63	2017-00446	3S	28E	1
56	AMC444319	MJ 64	2017-00447	3S	28E	1
57	AMC444320	MJ 65	2017-00448	3S	28E	1
58	AMC444321	MJ 66	2017-00449	3S	28E	1
59	AMC444322	MJ 67	2017-00450	3S	28E	1
60	AMC444323	MJ 68	2017-00451	3S	28E	1
61	AMC444324	MJ 69	2017-00452	3S	28E	1
62	AMC444325	MJ 70	2017-00453	3S	28E	1
63	AMC444326	MJ 71	2017-00454	3S	28E,29E	1;6
64	AMC444327	MJ 72	2017-00455	3S	29E	6
65	AMC444328	MJ 73	2017-00456	3S	29E	6
66	AMC444329	MJ 74	2017-00457	3S	29E	6
67	AMC444330	MJ 75	2017-00458	3S	29E	6
68	AMC444331	MJ 76	2017-00459	3S	29E	6
69	AMC444332	MJ 77	2017-00460	3S	29E	6
70	AMC444333	MJ 78	2017-00461	3S	29E	6
71	AMC444334	MJ 79	2017-00462	3S	29E	5,6
72	AMC444335	MJ 80	2017-00463	3S	29E	5
73	AMC444336	MJ 81	2017-00464	3S	29E	5
74	AMC444337	MJ 82	2017-00465	3S	29E	5
75	AMC444338	MJ 83	2017-00466	3S	29E	5
76	AMC444339	MJ 88	2017-00467	3S	28E	12
77	AMC444340	MJ 89	2017-00468	3S	28E	12
78	AMC444341	MJ 90	2017-00469	3S	28E	12
79	AMC444342	MJ 91	2017-00470	3S	28E	12
80	AMC444343	MJ 92	2017-00471	3S	28E	12
81	AMC444344	MJ 93	2017-00472	3S	28E	12
82	AMC444345	MJ 94	2017-00473	3S	28E	12

2018 AUG 20 P 12:54  
 RECEIVED  
 BLM AZ STATE OFFICE  
 PHOENIX, ARIZONA

Federal Unpatented Claims

Project: Midnight Juniper

Greenlee  
Arizona

Line No.	BLM Serial No.	Claim Name	County Recorder		Township	Range	Section
			Fee # / Doc ID #				
83	AMC444346	MJ 95	2017-00474		3S	28E	12
84	AMC444347	MJ 96	2017-00475		3S	28E	12
85	AMC444348	MJ 97	2017-00476		3S	28E	12
86	AMC444349	MJ 98	2017-00477		3S	28E	12
87	AMC444350	MJ 99	2017-00478		3S	28E,29E	1,12;6,7
88	AMC444351	MJ 100	2017-00479		3S	29E	6,7
89	AMC444352	MJ 101	2017-00480		3S	29E	6,7
90	AMC444353	MJ 102	2017-00481		3S	29E	6,7
91	AMC444354	MJ 103	2017-00482		3S	29E	6,7
92	AMC444355	MJ 104	2017-00483		3S	29E	6,7
93	AMC444356	MJ 105	2017-00484		3S	29E	6,7
94	AMC444357	MJ 106	2017-00485		3S	29E	6,7
95	AMC444358	MJ 107	2017-00486		3S	29E	6,7
96	AMC444359	MJ 108	2017-00487		3S	29E	5,6,7,8
97	AMC444360	MJ 109	2017-00488		3S	29E	5,8
98	AMC444361	MJ 110	2017-00489		3S	29E	5,8
99	AMC444362	MJ 111	2017-00490		3S	29E	5,8
100	AMC444363	MJ 117	2017-00491		3S	28E	12
101	AMC444364	MJ 118	2017-00492		3S	28E	12
102	AMC444365	MJ 119	2017-00493		3S	28E	12
103	AMC444366	MJ 120	2017-00494		3S	28E	12
104	AMC444367	MJ 121	2017-00495		3S	28E	12
105	AMC444368	MJ 122	2017-00496		3S	28E	12
106	AMC444369	MJ 123	2017-00497		3S	28E	12
107	AMC444370	MJ 124	2017-00498		3S	28E	12
108	AMC444371	MJ 125	2017-00499		3S	28E	12
109	AMC444372	MJ 126	2017-00500		3S	28E	12
110	AMC444373	MJ 127	2017-00501		3S	28E	12
111	AMC444374	MJ 128	2017-00502		3S	28E,29E	12;7
112	AMC444375	MJ 129	2017-00503		3S	29E	7
113	AMC444376	MJ 130	2017-00504		3S	29E	7
114	AMC444377	MJ 131	2017-00505		3S	29E	7
115	AMC444378	MJ 132	2017-00506		3S	29E	7
116	AMC444379	MJ 133	2017-00507		3S	29E	7
117	AMC444380	MJ 134	2017-00508		3S	29E	7
118	AMC444381	MJ 135	2017-00509		3S	29E	7
119	AMC444382	MJ 136	2017-00510		3S	29E	7
120	AMC444383	MJ 137	2017-00511		3S	29E	7,8
121	AMC444384	MJ 138	2017-00512		3S	29E	8
122	AMC444385	MJ 139	2017-00513		3S	29E	8
123	AMC444386	MJ 140	2017-00514		3S	29E	8
124	AMC444387	MJ 146	2017-00515		3S	28E	11,12

2018 AUG 20 P 12:54  
 PHOENIX, ARIZONA  
 RECEIVED  
 BLM AZ STATE OFFICE

Federal Unpatented Claims

Project: Midnight Juniper

Greenlee  
Arizona

Line No.	BLM Serial No.	Claim Name	County Recorder	Twnshp	Range	Section
			Fee # / Doc ID #			
125	AMC444388	MJ 147	2017-00516	3S	28E	12
126	AMC444389	MJ 148	2017-00517	3S	28E	12
127	AMC444390	MJ 149	2017-00518	3S	28E	12
128	AMC444391	MJ 150	2017-00519	3S	28E	12
129	AMC444392	MJ 151	2017-00520	3S	28E	12
130	AMC444393	MJ 152	2017-00521	3S	28E	12
131	AMC444394	MJ 153	2017-00522	3S	28E	12
132	AMC444395	MJ 154	2017-00523	3S	28E	12
133	AMC444396	MJ 155	2017-00524	3S	28E	12
134	AMC444397	MJ 156	2017-00525	3S	28E	12
135	AMC444398	MJ 157	2017-00526	3S	28E,29E	12;7
136	AMC444399	MJ 158	2017-00527	3S	29E	7
137	AMC444400	MJ 159	2017-00528	3S	29E	7
138	AMC444401	MJ 160	2017-00529	3S	29E	7
139	AMC444402	MJ 161	2017-00530	3S	29E	7
140	AMC444403	MJ 162	2017-00531	3S	29E	7
141	AMC444404	MJ 163	2017-00532	3S	29E	7
142	AMC444405	MJ 164	2017-00533	3S	29E	7
143	AMC444406	MJ 165	2017-00534	3S	29E	7
144	AMC444407	MJ 166	2017-00535	3S	29E	7,8
145	AMC444408	MJ 167	2017-00536	3S	29E	8
146	AMC444409	MJ 168	2017-00537	3S	28E,29E	8,13,14
147	AMC444410	MJ 169	2017-00538	3S	28E	13
148	AMC444411	MJ 170	2017-00539	3S	28E	13
149	AMC444412	MJ 171	2017-00540	3S	28E	12,13
150	AMC444413	MJ 172	2017-00541	3S	28E	12,13
151	AMC444414	MJ 173	2017-00542	3S	28E	12,13
152	AMC444415	MJ 174	2017-00543	3S	28E	12,13
153	AMC444416	MJ 175	2017-00544	3S	28E	12,13
154	AMC444417	MJ 176	2017-00545	3S	28E	12,13
155	AMC444418	MJ 177	2017-00546	3S	28E	12,13
156	AMC444419	MJ 178	2017-00547	3S	28E	12,13
157	AMC444420	MJ 179	2017-00548	3S	28E,29E	12,13;7,18
158	AMC444421	MJ 180	2017-00549	3S	29E	7,18
159	AMC444422	MJ 181	2017-00550	3S	29E	7,18
160	AMC444423	MJ 182	2017-00551	3S	29E	7,18
161	AMC444424	MJ 183	2017-00552	3S	29E	7,18
162	AMC444425	MJ 184	2017-00553	3S	29E	7,18
163	AMC444426	MJ 185	2017-00554	3S	29E	7,18
164	AMC444427	MJ 186	2017-00555	3S	29E	7,18
165	AMC444428	MJ 187	2017-00556	3S	29E	7,18
166	AMC444429	MJ 188	2017-00557	3S	29E	7,8,17,18

2018 AUG 20 P 12:54  
 PHOENIX, ARIZONA  
 RECEIVED  
 BLM AZ STATE OFFICE



Federal Unpatented Claims

Project: Midnight Juniper

Greenlee  
Arizona

Line No.	BLM Serial No.	Claim Name	County Recorder		Twنشp	Range	Section
			Fee # / Doc ID #				
167	AMC444430	MJ 189	2017-00558		3S	29E	8,17
168	AMC444431	MJ 190	2017-00559		3S	28E	13,14
169	AMC444432	MJ 191	2017-00560		3S	28E	13
170	AMC444433	MJ 192	2017-00561		3S	28E	13
171	AMC444434	MJ 193	2017-00562		3S	28E	13
172	AMC444435	MJ 194	2017-00563		3S	28E	13
173	AMC444436	MJ 195	2017-00564		3S	28E	13
174	AMC444437	MJ 196	2017-00565		3S	28E	13
175	AMC444438	MJ 197	2017-00566		3S	28E	13
176	AMC444439	MJ 198	2017-00567		3S	28E	13
177	AMC444440	MJ 199	2017-00568		3S	28E	13
178	AMC444441	MJ 200	2017-00569		3S	28E	13
179	AMC444442	MJ 201	2017-00570		3S	28E,29E	13;18
180	AMC444443	MJ 202	2017-00571		3S	28E,29E	13;18
181	AMC444444	MJ 203	2017-00572		3S	29E	18
182	AMC444445	MJ 204	2017-00573		3S	29E	18
183	AMC444446	MJ 205	2017-00574		3S	29E	18
184	AMC444447	MJ 206	2017-00575		3S	29E	18
185	AMC444448	MJ 207	2017-00576		3S	29E	18
186	AMC444449	MJ 208	2017-00577		3S	29E	18
187	AMC444450	MJ 209	2017-00578		3S	29E	18
188	AMC444451	MJ 210	2017-00579		3S	29E	18
189	AMC444452	MJ 211	2017-00580		3S	29E	17
190	AMC444453	MJ 212	2017-00581		3S	28E	7,14
191	AMC444454	MJ 213	2017-00582		3S	28E	13
192	AMC444455	MJ 214	2017-00583		3S	28E	13
193	AMC444456	MJ 215	2017-00584		3S	28E	13
194	AMC444457	MJ 216	2017-00585		3S	28E	13
195	AMC444458	MJ 217	2017-00586		3S	28E	13
196	AMC444459	MJ 218	2017-00587		3S	28E	13
197	AMC444460	MJ 219	2017-00588		3S	28E	13
198	AMC444461	MJ 220	2017-00589		3S	28E	13
199	AMC444462	MJ 221	2017-00590		3S	28E	13
200	AMC444463	MJ 222	2017-00591		3S	28E	13
201	AMC444464	MJ 223	2017-00592		3S	28E	13
202	AMC444465	MJ 224	2017-00593		3S	28E,29E	13;18
203	AMC444466	MJ 225	2017-00594		3S	29E	18
204	AMC444467	MJ 226	2017-00595		3S	29E	18
205	AMC444468	MJ 227	2017-00596		3S	29E	18
206	AMC444469	MJ 228	2017-00597		3S	29E	18
207	AMC444470	MJ 229	2017-00598		3S	29E	18
208	AMC444471	MJ 230	2017-00599		3S	29E	18

2018 AUG 20 P 12:54  
 PHOENIX, ARIZONA  
 BLM AZ STATE OFFICE RECEIVED

Federal Unpatented Claims

Project: Midnight Juniper

Greenlee  
Arizona

Line No.	BLM Serial No.	Claim Name	County Recorder	Townshp	Range	Section
			Fee # / Doc ID #			
209	AMC444472	MJ 231	2017-00600	3S	29E	18
210	AMC444473	MJ 232	2017-00601	3S	29E	17,18
211	AMC444474	MJ 233	2017-00602	3S	29E	17
212	AMC444475	MJ 234	2017-00603	3S	28E	13,14
213	AMC444476	MJ 235	2017-00604	3S	28E	13
214	AMC444477	MJ 236	2017-00605	3S	28E	13
215	AMC444478	MJ 237	2017-00606	3S	28E	13
216	AMC444479	MJ 238	2017-00607	3S	28E	13
217	AMC444480	MJ 239	2017-00608	3S	28E	13
218	AMC444481	MJ 240	2017-00609	3S	28E	13
219	AMC444482	MJ 241	2017-00610	3S	28E	13
220	AMC444483	MJ 242	2017-00611	3S	28E	13
221	AMC444484	MJ 243	2017-00612	3S	28E	13
222	AMC444485	MJ 244	2017-00613	3S	28E	13
223	AMC444486	MJ 245	2017-00614	3S	28E	13
224	AMC444487	MJ 246	2017-00615	3S	28E,29E	13;18
225	AMC444488	MJ 247	2017-00616	3S	29E	18
226	AMC444489	MJ 248	2017-00617	3S	29E	18
227	AMC444490	MJ 249	2017-00618	3S	29E	18
228	AMC444491	MJ 250	2017-00619	3S	29E	18
229	AMC444492	MJ 251	2017-00620	3S	29E	18
230	AMC444493	MJ 252	2017-00621	3S	29E	18
231	AMC444494	MJ 253	2017-00622	3S	29E	18
232	AMC444495	MJ 254	2017-00623	3S	29E	18
233	AMC444496	MJ 255	2017-00624	3S	29E	17
234	AMC444497	MJ 256	2017-00625	3S	28E,29E	13,24;18,19
235	AMC444498	MJ 257	2017-00626	3S	28E,29E	24;19
236	AMC444499	MJ 258	2017-00627	3S	28E,29E	24;19
237	AMC444500	MJ 259	2017-00628	3S	28E,29E	24;19
238	AMC444501	MJ 260	2017-00629	3S	28E,29E	24;19
239	AMC444502	MJ 261	2017-00630	3S	28E,29E	24;19
240	AMC444503	MJ 262	2017-00631	3S	28E,29E	24;19
241	AMC444504	MJ 263	2017-00632	3S	28E,29E	24;19
242	AMC444505	MJ 264	2017-00633	3S	28E,29E	24;19
243	AMC444506	MJ 265	2017-00634	3S	28E,29E	24,25;19,30
244	AMC444507	MJ 266	2017-00635	3S	28E,29E	25;30
245	AMC444508	MJ 267	2017-00636	3S	28E,29E	25;30
246	AMC444509	MJ 268	2017-00637	3S	28E,29E	25;30
247	AMC444510	MJ 269	2017-00638	3S	28E,29E	25;30
248	AMC444511	MJ 270	2017-00639	3S	28E,29E	25;30
249	AMC444512	MJ 271	2017-00640	3S	28E,29E	25;30
250	AMC444513	MJ 272	2017-00641	3S	28E,29E	25;30

2018 AUG 20 P 12:54  
 PHOENIX, ARIZONA  
 BLM ARIZONA STATE OFFICE

Federal Unpatented Claims

Project: Midnight Juniper

Greenlee  
Arizona

Line No.	BLM Serial No.	Claim Name	County Recorder		Twنشp	Range	Section
			Fee # / Doc ID #				
251	AMC444514	MJ 273	2017-00642		3S	28E,29E	25;30,31
252	AMC444515	MJ 274	2017-00643		3S	29E	18,19
253	AMC444516	MJ 275	2017-00644		3S	29E	19
254	AMC444517	MJ 276	2017-00645		3S	29E	19
255	AMC444518	MJ 277	2017-00646		3S	29E	19
256	AMC444519	MJ 278	2017-00647		3S	29E	19
257	AMC444520	MJ 279	2017-00648		3S	29E	19
258	AMC444521	MJ 280	2017-00649		3S	29E	19
259	AMC444522	MJ 281	2017-00650		3S	29E	19
260	AMC444523	MJ 282	2017-00651		3S	29E	19
261	AMC444524	MJ 283	2017-00652		3S	29E	19,30
262	AMC444525	MJ 284	2017-00653		3S	29E	30
263	AMC444526	MJ 285	2017-00654		3S	29E	30
264	AMC444527	MJ 286	2017-00655		3S	29E	30
265	AMC444528	MJ 287	2017-00656		3S	29E	30
266	AMC444529	MJ 288	2017-00657		3S	29E	30
267	AMC444530	MJ 289	2017-00658		3S	29E	30
268	AMC444531	MJ 290	2017-00659		3S	29E	30
269	AMC444532	MJ 291	2017-00660		3S	29E	30,31
270	AMC444533	MJ 292	2017-00661		3S	29E	18,19
271	AMC444534	MJ 293	2017-00662		3S	29E	19
272	AMC444535	MJ 294	2017-00663		3S	29E	19
273	AMC444536	MJ 295	2017-00664		3S	29E	19
274	AMC444537	MJ 296	2017-00665		3S	29E	19
275	AMC444538	MJ 297	2017-00666		3S	29E	19
276	AMC444539	MJ 298	2017-00667		3S	29E	19
277	AMC444540	MJ 299	2017-00668		3S	29E	19
278	AMC444541	MJ 300	2017-00669		3S	29E	19
279	AMC444542	MJ 301	2017-00670		3S	29E	19,30
280	AMC444543	MJ 302	2017-00671		3S	29E	30
281	AMC444544	MJ 303	2017-00672		3S	29E	30
282	AMC444545	MJ 304	2017-00673		3S	29E	30
283	AMC444546	MJ 305	2017-00674		3S	29E	30
284	AMC444547	MJ 306	2017-00675		3S	29E	30
285	AMC444548	MJ 307	2017-00676		3S	29E	30
286	AMC444549	MJ 308	2017-00677		3S	29E	30
287	AMC444550	MJ 309	2017-00678		3S	29E	30,31
288	AMC444551	MJ 310	2017-00679		3S	29E	17,18,19,20
289	AMC444552	MJ 311	2017-00680		3S	29E	19
290	AMC444553	MJ 312	2017-00681		3S	29E	19
291	AMC444554	MJ 313	2017-00682		3S	29E	19
292	AMC444555	MJ 314	2017-00683		3S	29E	19

PHOENIX, ARIZONA  
 2018 AUG 20 P 12:53

RECEIVED  
 BLM AT STATE OFFICE

Federal Unpatented Claims

Project: Midnight Juniper

Greenlee  
Arizona

Line No.	BLM Serial No.	Claim Name	County Recorder	TwnsHP	Range	Section
			Fee # / Doc ID #			
293	AMC444556	MJ 315	2017-00684	3S	29E	19
294	AMC444557	MJ 316	2017-00685	3S	29E	19
295	AMC444558	MJ 317	2017-00686	3S	29E	19
296	AMC444559	MJ 318	2017-00687	3S	29E	19
297	AMC444560	MJ 319	2017-00688	3S	29E	19,30
298	AMC444561	MJ 320	2017-00689	3S	29E	30
299	AMC444562	MJ 321	2017-00690	3S	29E	30
300	AMC444563	MJ 322	2017-00691	3S	29E	30
301	AMC444564	MJ 323	2017-00692	3S	29E	30
302	AMC444565	MJ 324	2017-00693	3S	29E	30
303	AMC444566	MJ 325	2017-00694	3S	29E	30
304	AMC444567	MJ 326	2017-00695	3S	29E	30
305	AMC444568	MJ 327	2017-00696	3S	29E	30,31

Total Claims 305

RECEIVED  
BLM AZ STAFF OFFICE  
2018 AUG 20 P 12:55  
PHOENIX, ARIZONA





Bronco Creek Exploration Inc.  
1815 East Winsett Street  
Tucson, Arizona 85719-6547

Tel: (520) 624-4153  
Fax: (520) 624-4192  
www.broncocreek.com

After recording, return to:  
Bronco Creek Exploration, Inc.  
1815 East Winsett Street  
Tucson, AZ 85719-6547

August 5, 2018

Bureau of Land Management  
One North Central Avenue, Suite 800  
Phoenix, AZ 85004-4427  
(602) 417-9200

RECEIVED  
BLM AZ STATE OFFICE  
2018 AUG 20 P 12:53  
PHOENIX, ARIZONA

**Re: Maintenance Fee Payment for Lode Claims**

Please accept the following 2019 maintenance fee payment documents enclosed on behalf of the claimant, Bronco Creek Exploration, Inc., of 1815 East Winsett Street, Tucson, Arizona 85719:

- Exhibit A- List of 151 mining claims and AMC numbers to be included in this maintenance fee payment.
- Check # 3525 in the amount of \$23,405 (\$155.00 x 151 unpatented mining claims located in Gila County, Arizona)

If there are any questions or problems, please contact me at (520) 624-4153, [ccreel@broncocreek.com](mailto:ccreel@broncocreek.com) or at the address above. Thank you very much for your assistance.

Sincerely,

Chris Creel  
Logistics Coordinator

#4240670

# Exhibit A

Federal Unpatented Claims

Project: Jasper Canyon

Gila  
Arizona

Line No.	BLM Serial No.	Claim Name	County Recorder		Townshp	Range	Section
			Fee # / Doc ID #				
1	AMC392786	JC 47	2008-007627		2N	15E	29,32
2	AMC392787	JC 48	2008-007628		2N	15E	28,29,32,33
3	AMC392788	JC 49	2008-007629		2N	15E	28,33
4	AMC392789	JC 50	2008-007630		2N	15E	28,33
5	AMC392790	JC 51	2008-007631		2N	15E	28,33
6	AMC392791	JC 52	2008-007632		2N	15E	28,33
7	AMC392792	JC 53	2008-007633		2N	15E	28,33
8	AMC392793	JC 54	2008-007634		2N	15E	28,33
9	AMC392794	JC 55	2008-007635, 2012-007652		2N	15E	28,33
10	AMC392795	JC 56	2008-007636, 2012-007653		2N	15E	28,33
11	AMC392796	JC 57	2008-007637		2N	15E	27,28,33,34
12	AMC392797	JC 58	2008-007638		2N	15E	27,34
13	AMC392798	JC 59	2008-007639		2N	15E	27,34
14	AMC392799	JC 60	2008-007640		2N	15E	27,34
15	AMC392800	JC 61	2008-007641		2N	15E	27,34
16	AMC392801	JC 62	2008-007642		2N	15E	27,34
17	AMC392802	JC 63	2008-007643		2N	15E	32
18	AMC392803	JC 64	2008-007644		2N	15E	27,33
19	AMC392804	JC 65	2008-007645		2N	15E	33
20	AMC392805	JC 66	2008-007646		2N	15E	33
21	AMC392807	JC 68	2008-007648		2N	15E	33
22	AMC392808	JC 69	2008-007649		2N	15E	33
23	AMC392809	JC 70	2008-007650		2N	15E	33,34
24	AMC392810	JC 71	2008-007651		2N	15E	34
25	AMC392811	JC 72	2008-007652		2N	15E	34
26	AMC392812	JC 73	2008-007653		2N	15E	34
27	AMC392813	JC 74	2008-007654		2N	15E	34
28	AMC392814	JC 75	2008-007655		2N	15E	34
29	AMC392815	JC 76	2008-007656		2N	15E	34
30	AMC392816	JC 77	2008-007657		2N	15E	34
31	AMC392817	JC 78	2008-007658		2N	15E	34
32	AMC392818	JC 79	2008-007659		2N	15E	32,33
33	AMC392819	JC 80	2008-007660		2N	15E	32,33
34	AMC392820	JC 81	2008-007661		2N	15E	33,34
35	AMC392821	JC 82	2008-007662		2N	15E	34
36	AMC392822	JC 83	2008-007663		2N	15E	34
37	AMC392823	JC 84	2008-007664		2N	15E	34
38	AMC392824	JC 85	2008-007665		2N	15E	34
39	AMC392826	JC 87	2008-007667		2N	15E	33
40	AMC392827	JC 88	2008-007668		2N	15E	33

2010 AUG 20 P 12:53  
 PHOENIX, ARIZONA  
 DEPT. OF STATE OFFICE

Federal Unpatented Claims

Project: Jasper Canyon

Gila  
Arizona

Line No.	BLM Serial No.	Claim Name	County Recorder	Twنشp	Range	Section
			Fee # / Doc ID #			
41	AMC392828	JC 89	2008-007669	2N	15E	33
42	AMC392829	JC 90	2008-007670	2N	15E	33
43	AMC392830	JC 91	2008-007671	2N	15E	33
44	AMC392831	JC 92	2008-007672	2N	15E	33
45	AMC392832	JC 93	2008-007673	2N	15E	33,34
46	AMC392833	JC 94	2008-007674	2N	15E	34
47	AMC392834	JC 95	2008-007675	2N	15E	34
48	AMC392835	JC 96	2008-007676	2N	15E	34
49	AMC392836	JC 97	2008-007677	2N	15E	34
50	AMC392838	JC 99	2008-007679	1N,2N	15E	4;33
51	AMC392839	JC 100	2008-007680	1N,2N	15E	4;33
52	AMC392840	JC 101	2008-007681	1N,2N	15E	4;33
53	AMC392841	JC 102	2008-007682	1N,2N	15E	4;33
54	AMC392842	JC 103	2008-007683	1N,2N	15E	4;33
55	AMC392855	JC 116	2008-007696	1N	15E	4
56	AMC392856	JC 117	2008-007697	1N	15E	4
57	AMC392857	JC 118	2008-007698	1N	15E	4
58	AMC392871	JC 132	2008-007712	2N	15E	33
59	AMC392872	JC 133	2008-007713	2N	15E	33
60	AMC392873	JC 134	2008-007714	2N	15E	33
61	AMC392874	JC 135	2008-007715	2N	15E	33
62	AMC392875	JC 136	2008-007716	2N	15E	33
63	AMC392876	JC 137	2008-007717	2N	15E	33
64	AMC392877	JC 138	2008-007718	2N	15E	33
65	AMC392878	JC 139	2008-007719	1N	15E	4
66	AMC392888	JC 149	2008-007729	2N	15E	27,34
67	AMC392889	JC 150	2008-007730	2N	15E	27,34
68	AMC392890	JC 151	2008-007731	2N	15E	26,27,34,35
69	AMC392891	JC 152	2008-007732	2N	15E	34
70	AMC392892	JC 153	2008-007733	2N	15E	34
71	AMC392893	JC 154	2008-007734	2N	15E	34,35
72	AMC398522	JC 36	2009-014185	2N	15E	28
73	AMC398523	JC 37	2009-014186	2N	15E	28
74	AMC398524	JC 38	2009-014187	2N	15E	28
75	AMC398525	JC 39	2009-014188	2N	15E	28
76	AMC398526	JC 40	2009-014189	2N	15E	28
77	AMC398527	JC 41	2009-014190	2N	15E	27,28
78	AMC398528	JC 42	2009-014191	2N	15E	27
79	AMC398529	JC 43	2009-014192	2N	15E	27
80	AMC398530	JC 44	2009-014193	2N	15E	27
81	AMC398531	JC 45	2009-014194	2N	15E	27
82	AMC398532	JC 46	2009-014195	2N	15E	27

PHOENIX, ARIZONA  
 2018 AUG 20 P 12: 53  
 COUNTY CLERK'S OFFICE

Federal Unpatented Claims

Project: Jasper Canyon

Gila  
Arizona

Line No.	BLM Serial No.	Claim Name	County Recorder		TwnsHP	Range	Section
			Fee # / Doc ID #				
83	AMC398533	JC 86	2009-014196		2N	15E	34
84	AMC398534	JC 98	2009-014197		2N	15E	34
85	AMC398535	JC 104	2009-014198		1N,2N	15E	4;33
86	AMC398536	JC 105	2009-014199		1N,2N	15E	3,4;33,34
87	AMC398537	JC 106	2009-014200		1N,2N	15E	3;34
88	AMC398559	JC 146	2009-014222		2N	15E	27
89	AMC398560	JC 147	2009-014223		2N	15E	27
90	AMC398561	JC 148	2009-014224		2N	15E	26,27
91	AMC410492	JC 67	2011-009939		2N	15E	33
92	AMC416293	JC 18	2012-007671		2N	15E	28
93	AMC416294	JC 19	2012-007672		2N	15E	28
94	AMC416295	JC 20	2012-007673		2N	15E	28
95	AMC416296	JC 21	2012-007674		2N	15E	28
96	AMC416297	JC 22	2012-007675		2N	15E	28
97	AMC416298	JC 23	2012-007676		2N	15E	28
98	AMC416299	JC 24	2012-007677		2N	15E	27,28
99	AMC416300	JC 25	2012-007678		2N	15E	27
100	AMC416301	JC 26	2012-007679		2N	15E	27
101	AMC416302	JC 27	2012-007680		2N	15E	27
102	AMC416303	JC 28	2012-007681		2N	15E	27
103	AMC416304	JC 29	2012-007682		2N	15E	27
104	AMC416305	JC 30	2012-007683		2N	15E	29
105	AMC416306	JC 31	2012-007684		2N	15E	29
106	AMC416307	JC 32	2012-007685		2N	15E	28,29
107	AMC416308	JC 33	2012-007686		2N	15E	28
108	AMC416309	JC 34	2012-007687		2N	15E	28
109	AMC416310	JC 35	2012-007688		2N	15E	28
110	AMC416311	JC 107	2012-007689		1N,2N	15E	3;34
111	AMC416312	JC 108	2012-007690		1N,2N	15E	3;34
112	AMC416313	JC 109	2012-007691		1N,2N	15E	3;34
113	AMC416314	JC 110	2012-007692		1N,2N	15E	3;34
114	AMC416315	JC 111	2012-007693		1N,2N	15E	3;34
115	AMC416316	JC 112	2012-007694		1N,2N	15E	3;34
116	AMC416317	JC 113	2012-007695		1N,2N	15E	2,3;34,35
117	AMC416318	JC 114	2012-007696		1N,2N	15E	2;35
118	AMC416319	JC 115	2012-007697		1N,2N	15E	2;35
119	AMC416320	JC 119	2012-007698		1N	15E	4
120	AMC416321	JC 120	2012-007699		1N	15E	4
121	AMC416322	JC 121	2012-007700		1N	15E	3,4
122	AMC416323	JC 122	2012-007701		1N	15E	3
123	AMC416324	JC 123	2012-007702		1N	15E	3
124	AMC416325	JC 124	2012-007703		1N	15E	3

2018 AUG 20 P 12:54  
 PHOENIX, ARIZONA  
 RECEIVED  
 BLM AZ STATE OFFICE



## Federal Unpatented Claims

## Project: Jasper Canyon

Gila  
Arizona

Line No.	BLM Serial No.	Claim Name	County Recorder		Twنشp	Range	Section
			Fee # / Doc ID #				
125	AMC416326	JC 125	2012-007704		1N	15E	3
126	AMC416327	JC 126	2012-007705		1N	15E	3
127	AMC416328	JC 127	2012-007706		1N	15E	3
128	AMC416329	JC 128	2012-007707		1N	15E	3
129	AMC416330	JC 129	2012-007708		1N	15E	2,3
130	AMC416331	JC 130	2012-007709		1N	15E	2
131	AMC416332	JC 131	2012-007710		1N	15E	2
132	AMC416336	JC 143	2012-007714		2N	15E	27
133	AMC416337	JC 144	2012-007715		2N	15E	27
134	AMC416338	JC 145	2012-007716		2N	15E	26,27
135	AMC416339	JC 155	2012-007717		2N	15E	34
136	AMC416340	JC 156	2012-007718		2N	15E	34
137	AMC416341	JC 157	2012-007719		2N	15E	34,35
138	AMC416342	JC 158	2012-007720		2N	15E	34
139	AMC416343	JC 159	2012-007721		2N	15E	34
140	AMC416344	JC 160	2012-007722		2N	15E	34,35
141	AMC416345	JC 161	2012-007723		2N	15E	28
142	AMC416346	JC 162	2012-007724		2N	15E	28
143	AMC416347	JC 163	2012-007725		1N	15E	2
144	AMC425575	JC 301	2013-014346		2N	15E	32
145	AMC425576	JC 302	2013-014347		2N	15E	32
146	AMC425577	JC 303	2013-014348		2N	15E	32
147	AMC425578	JC 304	2013-014349		2N	15E	32
148	AMC425579	JC 305	2013-014350		2N	15E	32
149	AMC425580	JC 306	2013-014351		2N	15E	33
150	AMC425581	JC 307	2013-014352		2N	15E	33
151	AMC425582	JC 308	2013-014353		1N	15E	4

Total Claims 151

RECEIVED  
BLM AZ STATE OFFICE  
2018 AUG 20 P 12:54  
PHOENIX, ARIZONA



Bronco Creek Exploration Inc.  
1815 East Winsett Street  
Tucson, Arizona 85719-6547

Tel: (520) 624-4153  
Fax: (520) 624-4192  
www.broncocreek.com

After recording, return to:  
Bronco Creek Exploration, Inc.  
1815 East Winsett Street  
Tucson, AZ 85719-6547

August 5, 2018

Bureau of Land Management  
One North Central Avenue, Suite 800  
Phoenix, AZ 85004-4427  
(602) 417-9200

RECEIVED  
BLM AZ STATE OFFICE  
2018 AUG 20 P 12:53  
PHOENIX, ARIZONA

**Re: Maintenance Fee Payment for Lode Claims**

Please accept the following 2019 maintenance fee payment documents enclosed on behalf of the claimant, Bronco Creek Exploration, Inc., of 1815 East Winsett Street, Tucson, Arizona 85719:

- Exhibit A- List of 160 mining claims and AMC numbers to be included in this maintenance fee payment.
- Check # 3524 in the amount of \$24,800 (\$155.00 x 160 unpatented mining claims located in Pinal County, Arizona)

If there are any questions or problems, please contact me at (520) 624-4153, ccreel@broncocreek.com or at the address above. Thank you very much for your assistance.

Sincerely,

Chris Creel  
Land Manager

#4240670

# Exhibit A

Federal Unpatented Claims

Project: Dragon's Tail

Pinal  
Arizona

Line No.	BLM Serial No.	Claim Name	County Recorder		Township	Range	Section
			Fee # /	Doc ID #			
1	AMC442857	MFE 1	2017-018756, 2017-028991		1S	12E	1
2	AMC442858	MFE 2	2017-018757, 2017-028991		1S	12E	1
3	AMC442859	MFE 3	2017-018758, 2017-028991		1S	12E	1
4	AMC442860	MFE 4	2017-018759, 2017-028991		1S	12E	1
5	AMC442861	MFE 5	2017-018760, 2017-028991		1S	12E	1
6	AMC442862	MFE 6	2017-018761, 2017-028991		1S	12E	1,12
7	AMC442863	MFE 7	2017-018762, 2017-028991		1S	12E	12
8	AMC442864	MFE 8	2017-018763, 2017-028991		1S	12E	1
9	AMC442865	MFE 9	2017-018764, 2017-028991		1S	12E	1
10	AMC442866	MFE 10	2017-018765, 2017-028991		1S	12E	1
11	AMC442867	MFE 11	2017-018766, 2017-028991		1S	12E	1
12	AMC442868	MFE 12	2017-018767, 2017-028991		1S	12E	1
13	AMC442869	MFE 13	2017-018768, 2017-028991		1S	12E	1
14	AMC442870	MFE 14	2017-018769, 2017-028991		1S	12E	1,12
15	AMC442871	MFE 15	2017-018770, 2017-028991		1S	12E	12
16	AMC442872	MFE 16	2017-018771, 2017-028991		1S	12E	1
17	AMC442873	MFE 17	2017-018772, 2017-028991		1S	12E	1
18	AMC442874	MFE 18	2017-018773, 2017-028991		1S	12E	1
19	AMC442875	MFE 19	2017-018774, 2017-028991		1S	12E	1
20	AMC442876	MFE 20	2017-018775, 2017-028991		1S	12E	1
21	AMC442877	MFE 21	2017-018776, 2017-028991		1S	12E	1
22	AMC442878	MFE 22	2017-018777, 2017-028991		1S	12E	1,12
23	AMC442879	MFE 23	2017-018778, 2017-028991		1S	12E	12
24	AMC442880	MFE 24	2017-018779, 2017-028991		1S	12E,13E	1,6
25	AMC442881	MFE 25	2017-018780, 2017-028991		1S	12E,13E	1,6
26	AMC442882	MFE 26	2017-018781, 2017-028991		1S	12E,13E	1,6
27	AMC442883	MFE 27	2017-018782, 2017-028991		1S	12E,13E	1,6
28	AMC442884	MFE 28	2017-018783, 2017-028991		1S	12E,13E	1,6
29	AMC442885	MFE 29	2017-018784, 2017-028991		1S	12E,13E	1,6
30	AMC442886	MFE 30	2017-018785, 2017-028991		1S	12E,13E	1,6
31	AMC442887	MFE 31	2017-018786, 2017-028991		1S	12E,13E	1,12;6,7
32	AMC442888	MFE 32	2017-018787, 2017-028991		1S	12E,13E	12,7
33	AMC442889	MFE 33	2017-018788, 2017-028991		1S	13E	5,6
34	AMC442890	MFE 34	2017-018789, 2017-028991		1S	13E	5,6
35	AMC442891	MFE 35	2017-018790, 2017-028991		1S	13E	5,6
36	AMC442892	MFE 36	2017-018791, 2017-028991		1S	13E	5,6
37	AMC442893	MFE 37	2017-018792, 2017-028991		1S	13E	5,6
38	AMC442894	MFE 38	2017-018793, 2017-028991		1S	13E	5,6
39	AMC442895	MFE 39	2017-018794, 2017-028991		1S	13E	5,6,7,8
40	AMC442896	MFE 40	2017-018795, 2017-028991		1S	13E	7,8

2018 AUG 20 P 12:53  
 PHOENIX, ARIZONA  
 RECEIVED  
 BLM AZ STATE OFFICE

Federal Unpatented Claims

Project: Dragon's Tail

Pinal  
Arizona

Line No.	BLM Serial No.	Claim Name	County Recorder	Twnshp	Range	Section
			Fee # / Doc ID #			
41	AMC442897	MFE 41	2017-018796, 2017-028991	1S	13E	5
42	AMC442898	MFE 42	2017-018797, 2017-028991, 2017-028992	1S	13E	5
43	AMC442899	MFE 43	2017-018798, 2017-028991, 2017-028993	1S	13E	5
44	AMC442900	MFE 44	2017-018799, 2017-028991, 2017-028994	1S	13E	5
45	AMC442901	MFE 45	2017-018800, 2017-028991, 2017-028995	1S	13E	5
46	AMC442902	MFE 46	2017-018801, 2017-028991, 2017-028996	1S	13E	5
47	AMC442903	MFE 47	2017-018802, 2017-028991, 2017-028997	1S	13E	5
48	AMC442904	MFE 48	2017-018803, 2017-028991	1S	13E	5,8
49	AMC442905	MFE 49	2017-018804, 2017-028991	1S	13E	8
50	AMC442906	MFE 50	2017-018805, 2017-028991	1S	13E	5
51	AMC442907	MFE 51	2017-018806, 2017-028991, 2017-028998	1S	13E	5
52	AMC442908	MFE 52	2017-018807, 2017-028991, 2017-028999	1S	13E	5
53	AMC442909	MFE 53	2017-018808, 2017-028991, 2017-029000	1S	13E	5
54	AMC442910	MFE 54	2017-018809, 2017-028991, 2017-029001	1S	13E	5
55	AMC442911	MFE 55	2017-018810, 2017-028991, 2017-029002	1S	13E	5
56	AMC442912	MFE 56	2017-018811, 2017-028991, 2017-029003	1S	13E	5
57	AMC442913	MFE 57	2017-018812, 2017-028991	1S	13E	5,8
58	AMC442914	MFE 58	2017-018813, 2017-028991	1S	13E	8
59	AMC442915	MFE 59	2017-018814, 2017-028991	1S	13E	8
60	AMC442916	MFE 60	2017-018815, 2017-028991	1S	13E	8
61	AMC442917	MFE 61	2017-018816, 2017-028991	1S	13E	4,5
62	AMC442918	MFE 62	2017-018817, 2017-028991	1S	13E	4,5
63	AMC442919	MFE 63	2017-018818, 2017-028991	1S	13E	4,5
64	AMC442920	MFE 64	2017-018819, 2017-028991	1S	13E	4,5
65	AMC442921	MFE 65	2017-018820, 2017-028991	1S	13E	4,5
66	AMC442922	MFE 66	2017-018821, 2017-028991	1S	13E	4,5
67	AMC442923	MFE 67	2017-018822, 2017-028991	1S	13E	4,5
68	AMC442924	MFE 68	2017-018823, 2017-028991	1S	13E	4,5
69	AMC442925	MFE 69	2017-018824, 2017-028991	1S	13E	4,5,8,9
70	AMC442926	MFE 70	2017-018825, 2017-028991	1S	13E	8,9
71	AMC442927	MFE 71	2017-018826, 2017-028991	1S	13E	8,9

PHOENIX, ARIZONA

2018 AUG 20 PM 12:53

RECEIVED  
BLM AZ STATE OFFICE

Federal Unpatented Claims

Project: Dragon's Tail

Pinal  
Arizona

Line No.	BLM Serial No.	Claim Name	County Recorder		Twنشp	Range	Section
			Fee # / Doc ID #				
72	AMC442928	MFE 72	2017-018827, 2017-028991		1S	13E	8,9
73	AMC442929	MFE 90	2017-018828, 2017-028991		1S	13E	4
74	AMC442930	MFE 91	2017-018829, 2017-028991		1S	13E	4
75	AMC442931	MFE 92	2017-018830, 2017-028991		1S	13E	4
76	AMC442932	MFE 93	2017-018831, 2017-028991		1S	13E	4
77	AMC442933	MFE 94	2017-018832, 2017-028991		1S	13E	4
78	AMC442934	MFE 95	2017-018833, 2017-028991		1S	13E	4
79	AMC442935	MFE 96	2017-018834, 2017-028991		1S	13E	4
80	AMC442936	MFE 97	2017-018835, 2017-028991		1S	13E	4
81	AMC442937	MFE 98	2017-018836, 2017-028991		1S	13E	4,9
82	AMC442938	MFE 99	2017-018837, 2017-028991		1S	13E	4,9
83	AMC442939	MFE 111	2017-018838, 2017-028991		1N	13E	32,33
84	AMC442940	MFE 112	2017-018839, 2017-028991		1N	13E	32,33
85	AMC442941	MFE 113	2017-018840, 2017-028991		1N	13E	32,33
86	AMC442942	MFE 114	2017-018841, 2017-028991		1N	13E	32,33
87	AMC442943	MFE 115	2017-018842, 2017-028991		1N	13E	32,33
88	AMC442944	MFE 116	2017-018843, 2017-028991		1N,1S	13E	32,33;4
89	AMC442945	MFE 117	2017-018844, 2017-028991		1S	13E	4
90	AMC442946	MFE 118	2017-018845, 2017-028991		1S	13E	4
91	AMC442947	MFE 119	2017-018846, 2017-028991		1S	13E	4
92	AMC442948	MFE 120	2017-018847, 2017-028991		1S	13E	4
93	AMC442949	MFE 121	2017-018848, 2017-028991		1S	13E	4
94	AMC442950	MFE 122	2017-018849, 2017-028991		1S	13E	4
95	AMC442951	MFE 123	2017-018850, 2017-028991		1S	13E	4
96	AMC442952	MFE 124	2017-018851, 2017-028991		1S	13E	4
97	AMC442953	MFE 125	2017-018852, 2017-028991		1S	13E	4,9
98	AMC442954	MFE 137	2017-018853, 2017-028991		1N	13E	33
99	AMC442955	MFE 138	2017-018854, 2017-028991		1N	13E	33
100	AMC442956	MFE 139	2017-018855, 2017-028991		1N	13E	33
101	AMC442957	MFE 140	2017-018856, 2017-028991		1N	13E	33
102	AMC442958	MFE 141	2017-018857, 2017-028991		1N	13E	33
103	AMC442959	MFE 142	2017-018858, 2017-028991		1N,1S	13E	33;4
104	AMC442960	MFE 143	2017-018859, 2017-028991		1S	13E	4
105	AMC442961	MFE 144	2017-018860, 2017-028991		1S	13E	4
106	AMC442962	MFE 145	2017-018861, 2017-028991		1S	13E	4
107	AMC442963	MFE 146	2017-018862, 2017-028991		1S	13E	4
108	AMC442964	MFE 147	2017-018863, 2017-028991		1S	13E	4
109	AMC442965	MFE 148	2017-018864, 2017-028991		1S	13E	4
110	AMC442966	MFE 149	2017-018865, 2017-028991		1S	13E	4
111	AMC442967	MFE 150	2017-018915, 2017-028991		1S	13E	4
112	AMC442968	MFE 162	2017-018866, 2017-028991		1N	13E	33
113	AMC442969	MFE 163	2017-018867, 2017-028991		1N	13E	33

2018 AUG 20 P 12:53  
 PHOENIX, ARIZONA

RECEIVED  
 BLM A2 STAFF OFFICE



Federal Unpatented Claims

Project: Dragon's Tail

Pinal  
Arizona

Line No.	BLM Serial No.	Claim Name	County Recorder	Township	Range	Section
			Fee # / Doc ID #			
114	AMC442970	MFE 164	2017-018868, 2017-028991	1N	13E	33
115	AMC442971	MFE 165	2017-018869, 2017-028991	1N	13E	33
116	AMC442972	MFE 166	2017-018870, 2017-028991	1N	13E	33
117	AMC442973	MFE 167	2017-018871, 2017-028991	1N,1S	13E	33;3,4
118	AMC442974	MFE 168	2017-018872, 2017-028991	1S	13E	3,4
119	AMC442975	MFE 169	2017-018873, 2017-028991	1S	13E	3,4
120	AMC442976	MFE 170	2017-018874, 2017-028991	1S	13E	3,4
121	AMC442977	MFE 171	2017-018875, 2017-028991	1S	13E	3,4
122	AMC442978	MFE 172	2017-018876, 2017-028991	1S	13E	3,4
123	AMC442979	MFE 173	2017-018877, 2017-028991	1S	13E	3,4
124	AMC442980	MFE 174	2017-018878, 2017-028991	1S	13E	3,4
125	AMC442981	MFE 187	2017-018879, 2017-028991	1N	13E	33,34
126	AMC442982	MFE 188	2017-018880, 2017-028991	1N	13E	33,34
127	AMC442983	MFE 189	2017-018881, 2017-028991	1N	13E	33,34
128	AMC442984	MFE 190	2017-018882, 2017-028991	1N	13E	33,34
129	AMC442985	MFE 191	2017-018883, 2017-028991	1N	13E	33,34
130	AMC442986	MFE 192	2017-018884, 2017-028991	1N,1S	13E	33,34;3
131	AMC442987	MFE 193	2017-018885, 2017-028991	1S	13E	3
132	AMC442988	MFE 194	2017-018886, 2017-028991	1S	13E	3
133	AMC442989	MFE 195	2017-018887, 2017-028991	1S	13E	3
134	AMC442990	MFE 196	2017-018888, 2017-028991	1S	13E	3
135	AMC442991	MFE 197	2017-018889, 2017-028991	1S	13E	3
136	AMC442992	MFE 209	2017-018890, 2017-028991	1N	13E	34
137	AMC442993	MFE 210	2017-018891, 2017-028991	1N	13E	34
138	AMC442994	MFE 211	2017-018892, 2017-028991	1N	13E	34
139	AMC442995	MFE 212	2017-018893, 2017-028991	1N	13E	34
140	AMC442996	MFE 213	2017-018894, 2017-028991	1N	13E	34
141	AMC442997	MFE 214	2017-018895, 2017-028991	1N,1S	13E	34;3
142	AMC442998	MFE 215	2017-018896, 2017-028991	1S	13E	3
143	AMC442999	MFE 216	2017-018897, 2017-028991	1S	13E	3
144	AMC443000	MFE 218	2017-018898, 2017-028991	1S	13E	3
145	AMC443001	MFE 219	2017-018899, 2017-028991	1S	13E	3
146	AMC443002	MFE 231	2017-018900, 2017-028991	1N	13E	34
147	AMC443003	MFE 232	2017-018901, 2017-028991	1N	13E	34
148	AMC443004	MFE 233	2017-018902, 2017-028991	1N	13E	34
149	AMC443005	MFE 234	2017-018903, 2017-028991	1N	13E	34
150	AMC443006	MFE 235	2017-018904, 2017-028991	1N	13E	34
151	AMC443007	MFE 236	2017-018905, 2017-028991	1N,1S	13E	34;2,3
152	AMC443008	MFE 237	2017-018906, 2017-028991	1S	13E	2,3
153	AMC443009	MFE 238	2017-018907, 2017-028991	1S	13E	2,3
154	AMC443010	MFE 240	2017-018908, 2017-028991	1N	13E	34
155	AMC443011	MFE 241	2017-018909, 2017-028991	1N	13E	34

2010 AUG 20 P 12:53  
 PHOENIX, ARIZONA  
 BLM AT STATE OFFICE

## Federal Unpatented Claims

## Project: Dragon's Tail

Pinal  
Arizona

Line No.	BLM Serial No.	Claim Name	County Recorder	Townshp	Range	Section
			Fee # / Doc ID #			
156	AMC443012	MFE 242	2017-018910, 2017-028991	1N	13E	34
157	AMC443013	MFE 243	2017-018911, 2017-028991	1N	13E	34
158	AMC443014	MFE 244	2017-018912, 2017-028991	1N	13E	34
159	AMC443015	MFE 245	2017-018913, 2017-028991	1N,1S	13E	34;2
160	AMC443016	MFE 246	2017-018914, 2017-028991	1S	13E	2

Total Claims 160

RECEIVED  
BLM AZ STATE OFFICE  
2018 AUG 20 P 12:53  
PHOENIX, ARIZONA



Bronco Creek Exploration Inc.  
1815 East Winsett Street  
Tucson, Arizona 85719-6547

Tel: (520) 624-4153  
Fax: (520) 624-4192  
www.broncocreek.com

After recording, return to:  
Bronco Creek Exploration, Inc.  
1815 East Winsett Street  
Tucson, AZ 85719-6547

August 5, 2018

Bureau of Land Management  
One North Central Avenue, Suite 800  
Phoenix, AZ 85004-4427  
(602) 417-9200

RECEIVED  
BLM AZ STATE OFFICE  
2018 AUG 20 P 12: 52  
PHOENIX, ARIZONA

**Re: Maintenance Fee Payment for Lode Claims**

Please accept the following 2019 maintenance fee payment documents enclosed on behalf of the claimant, Bronco Creek Exploration, Inc., of 1815 East Winsett Street, Tucson, Arizona 85719:

- Exhibit A- List of 122 mining claims and AMC numbers to be included in this maintenance fee payment.
- Check # 3523 in the amount of \$18,910 (\$155.00 x 122 unpatented mining claims located in Yavapai County, Arizona)

If there are any questions or problems, please contact me at (520) 624-4153, ccreel@broncocreek.com or at the address above. Thank you very much for your assistance.

Sincerely,

Chris Creel  
Land Manager

#4240670

# Exhibit A

Federal Unpatented Claims

Project: Copper Basin

Yavapai  
Arizona

Line No.	BLM Serial No.	Claim Name	County Recorder			Township	Range	Section
			Fee # / Doc ID #	Book	Page			
1	AMC400517	CB 5	2010-4395018	4744	441	9N	1W	2,3
2	AMC400518	CB 6	2010-4395019	4744	442	9N	1W	2
3	AMC400519	CB 7	2010-4395020	4744	443	9N	1W	2
4	AMC400520	CB 8	2010-4395021	4744	444	9N	1W	2
5	AMC400521	CB 9	2010-4395022	4744	445	9N	1W	3
6	AMC400522	CB 10	2010-4395023	4744	446	9N	1W	2,3
7	AMC400523	CB 11	2010-4395024	4744	447	9N	1W	2
8	AMC400524	CB 12	2010-4395025	4744	448	9N	1W	2
9	AMC400525	CB 13	2010-4395026	4744	449	9N	1W	2
10	AMC400526	CB 14	2010-4395027	4744	450	9N	1W	3
11	AMC400527	CB 15	2010-4395028	4744	451	9N	1W	2,3
12	AMC400528	CB 16	2010-4395029	4744	452	9N	1W	2
13	AMC400529	CB 17	2010-4395030	4744	453	9N	1W	2
14	AMC400530	CB 18	2010-4392031	4744	454	9N	1W	2
15	AMC400531	CB 19	2010-4392032	4744	455	9N	1W	3,10
16	AMC400532	CB 20	2010-4395033	4744	456	9N	1W	2,3,10,11
17	AMC400533	CB 21	2010-4395034	4744	457	9N	1W	11
18	AMC400534	CB 22	2010-4395035	4744	458	9N	1W	11
19	AMC400535	CB 23	2010-4395036	4744	459	9N	1W	11
20	AMC400536	CB 24	2010-4395037	4744	460	9N	1W	10
21	AMC400537	CB 25	2010-4395038	4744	461	9N	1W	10,11
22	AMC400538	CB 26	2010-4395039	4744	462	9N	1W	11
23	AMC400539	CB 27	2010-4395040	4744	463	9N	1W	11
24	AMC400540	CB 28	2010-4395041	4744	464	9N	1W	11
25	AMC400541	CB 29	2010-4395042	4744	465	9N	1W	10
26	AMC400542	CB 30	2010-4395043	4744	466	9N	1W	10,11
27	AMC400543	CB 31	2010-4395044	4744	467	9N	1W	11
28	AMC400544	CB 32	2010-4395045	4744	468	9N	1W	11
29	AMC400545	CB 33	2010-4395046	4744	469	9N	1W	11
30	AMC400546	CB 34	2010-4395047	4744	470	9N	1W	10
31	AMC400547	CB 35	2010-4395048	4744	471	9N	1W	10,11
32	AMC400548	CB 36	2010-4395049	4744	472	9N	1W	11
33	AMC400549	CB 37	2010-4395050	4744	473	9N	1W	11
34	AMC400550	CB 38	2010-4395051	4744	474	9N	1W	11
35	AMC400551	CB 39	2010-4395052	4744	475	9N	1W	10
36	AMC400552	CB 40	2010-4395053	4744	476	9N	1W	10,11
37	AMC400553	CB 41	2010-4395054	4744	477	9N	1W	11
38	AMC400554	CB 42	2010-4395055	4744	478	9N	1W	11
39	AMC400555	CB 43	2010-4395056	4744	479	9N	1W	11

PHOENIX, ARIZONA

2008 AUG 20 PM 12:52  
RECEIVED  
BLM RECORDS SECTION

Federal Unpatented Claims

Project: Copper Basin

Yavapai  
Arizona

Line No.	BLM Serial No.	Claim Name	County Recorder			Twنشp	Range	Section
			Fee # / Doc ID #	Book	Page			
40	AMC400556	CB 44	2010-4395057	4744	480	9N	1W	10
41	AMC400557	CB 45	2010-4395058	4744	481	9N	1W	10,11
42	AMC400558	CB 46	2010-4395059	4744	482	9N	1W	11
43	AMC400559	CB 47	2010-4395060	4744	483	9N	1W	11
44	AMC400560	CB 48	2010-4395061	4744	484	9N	1W	11
45	AMC400561	CB 49	2010-4395062	4744	485	9N	1W	10
46	AMC400562	CB 50	2010-4395063	4744	486	9N	1W	10,11
47	AMC400563	CB 51	2010-4395064	4744	487	9N	1W	11
48	AMC400564	CB 52	2010-4395065	4744	488	9N	1W	11
49	AMC400565	CB 53	2010-4395066	4744	489	9N	1W	11
50	AMC400566	CB 54	2010-4395067	4744	490	9N	1W	10
51	AMC400567	CB 55	2010-4395068	4744	491	9N	1W	10,11
52	AMC400570	CB 58	2010-4395071	4744	494	9N	1W	10
53	AMC400571	CB 59	2010-4395072	4744	495	9N	1W	10,11
54	AMC407981	CB 62	2011-0027882	4813	926	9N	1W	1,2
55	AMC407982	CB 63	2011-0027883	4813	927	9N	1W	1,2
56	AMC407983	CB 64	2011-0027884	4813	928	9N	1W	1,2
57	AMC407984	CB 65	2011-0027885	4813	929	9N	1W	1,2
58	AMC407985	CB 66	2011-0027886	4813	930	9N	1W	1,2
59	AMC407986	CB 67	2011-0027887	4813	931	9N	1W	1,2,11,12
60	AMC407987	CB 68	2011-0027888	4813	932	9N	1W	11,12
61	AMC407988	CB 69	2011-0027889	4813	933	9N	1W	11,12
62	AMC407989	CB 70	2011-0027890	4813	934	9N	1W	11,12
63	AMC407995	CB 76	2011-0027896	4813	940	9N	1W	1
64	AMC407996	CB 77	2011-0027897	4813	941	9N	1W	1
65	AMC407997	CB 78	2011-0027898	4813	942	9N	1W	1
66	AMC407998	CB 79	2011-0027899	4813	943	9N	1W	1,12
67	AMC407999	CB 80	2011-0027900	4813	944	9N	1W	12
68	AMC408000	CB 81	2011-0027901	4813	945	9N	1W	12
69	AMC408007	CB 88	2011-0027908	4813	952	9N	1W	1
70	AMC408008	CB 89	2011-0027909	4813	953	9N	1W	1
71	AMC408009	CB 90	2011-0027910	4813	954	9N	1W	1
72	AMC408010	CB 91	2011-0027911	4813	955	9N	1W	1,12
73	AMC408011	CB 92	2011-0027912	4813	956	9N	1W	12
74	AMC408012	CB 93	2011-0027913	4813	957	9N	1W	12
75	AMC411141	CB 124	2011-0049386	4835	344	9N	1W	3,4
76	AMC411142	CB 125	2011-0049387	4835	345	9N	1W	3
77	AMC411143	CB 126	2011-0049388	4835	346	9N	1W	3,4
78	AMC411144	CB 127	2011-0049389	4835	347	9N	1W	3
79	AMC411145	CB 128	2011-0049390	4835	348	9N	1W	3,4
80	AMC411146	CB 129	2011-0049391	4835	349	9N	1W	3

PHOENIX, ARIZONA

RECEIVED  
BLM AZ STATE OFFICE



Federal Unpatented Claims

Project: Copper Basin

Yavapai  
Arizona

Line No.	BLM Serial No.	Claim Name	County Recorder			Twنشp	Range	Section
			Fee # / Doc ID #	Book	Page			
81	AMC411147	CB 130	2011-0049392	4835	350	9N	1W	3,4,9,10
82	AMC411148	CB 131	2011-0049393	4835	351	9N	1W	3,10
83	AMC411149	CB 132	2011-0049394	4835	352	9N	1W	9,10
84	AMC411150	CB 133	2011-0049395	4835	353	9N	1W	10
85	AMC411151	CB 134	2011-0049396	4835	354	9N	1W	9,10
86	AMC411152	CB 135	2011-0049397	4835	355	9N	1W	10
87	AMC411153	CB 136	2011-0049398	4835	356	9N	1W	9,10
88	AMC411154	CB 137	2011-0049399	4835	357	9N	1W	10
89	AMC411155	CB 138	2011-0049400	4835	358	9N	1W	9,10
90	AMC411156	CB 139	2011-0049401	4835	359	9N	1W	10
91	AMC411157	CB 140	2011-0049402	4835	360	9N	1W	9,10
92	AMC411158	CB 141	2011-0049403	4835	361	9N	1W	10
93	AMC411159	CB 142	2011-0049404	4835	362	9N	1W	9,10
94	AMC411160	CB 143	2011-0049405	4835	363	9N	1W	10
95	AMC411161	CB 144	2011-0049406	4835	364	9N	1W	9,10,15,16
96	AMC411163	CB 146	2011-0049408	4835	366	9N	1W	10,15
97	AMC411165	CB 148	2011-0049410	4835	368	9N	1W	10,15
98	AMC411167	CB 150	2011-0049412	4835	370	9N	1W	10,15
99	AMC411169	CB 152	2011-0049414	4835	372	9N	1W	10,15
100	AMC411175	CB 158	2011-0049420	4835	378	9N	1W	10,15
101	AMC411177	CB 160	2011-0049422	4835	380	9N	1W	10,15
102	AMC411179	CB 162	2011-0049424	4835	382	9N	1W	10,15
103	AMC411207	CB 190	2011-0049452	4835	410	9N	1W	3
104	AMC411209	CB 192	2011-0049454	4835	412	9N	1W	3
105	AMC411211	CB 194	2011-0049456	4835	414	9N	1W	3
106	AMC411213	CB 196	2011-0049458	4835	416	9N	1W	3
107	AMC411215	CB 198	2011-0049460	4835	418	9N	1W	3
108	AMC411217	CB 200	2011-0049462	4835	420	9N	1W	2,3
109	AMC411219	CB 202	2011-0049464	4835	422	9N	1W	2
110	AMC411221	CB 204	2011-0049466	4835	424	9N	1W	2
111	AMC411223	CB 206	2011-0049468	4835	426	9N	1W	2
112	AMC411225	CB 208	2011-0049470	4835	428	9N	1W	2
113	AMC411226	CB 209	2011-0049471	4835	429	9N	1W	2
114	AMC411227	CB 210	2011-0049472	4835	430	9N	1W	2
115	AMC411228	CB 211	2011-0049473	4835	431	9N	1W	2
116	AMC411229	CB 212	2011-0049474	4835	432	9N	1W	2
117	AMC411230	CB 213	2011-0049475	4835	433	9N	1W	2
118	AMC411231	CB 214	2011-0049476	4835	434	9N	1W	2
119	AMC411232	CB 215	2011-0049477	4835	435	9N	1W	2
120	AMC411233	CB 216	2011-0049478	4835	436	9N	1W	2

2018 AUG 20 10:52 AM  
 RECEIVED  
 BLM AT STATE OFFICE  
 PHOENIX, ARIZONA

Federal Unpatented Claims

Project: Copper Basin

Yavapai  
Arizona

Line No.	BLM Serial No.	Claim Name	County Recorder			Townshp	Range	Section
			Fee # / Doc ID #	Book	Page			
121	AMC424333	CB 318	2013-0039494, 2013-0041710	4968; 4970	173; 386	9N	1W	9
122	AMC424334	CB 319	2013-0039495	4968	174	9N	1W	9

Total Claims 122

RECEIVED  
BLM AZ STATE OFFICE  
2018 AUG 20 P 12:52  
PHOENIX, ARIZONA



Bronco Creek Exploration Inc.  
1815 East Winsett Street  
Tucson, Arizona 85719-6547

Tel: (520) 624-4153  
Fax: (520) 624-4192  
www.broncocreek.com

After recording, return to:  
Bronco Creek Exploration, Inc.  
1815 East Winsett Street  
Tucson, AZ 85719-6547

August 5, 2018

Bureau of Land Management  
One North Central Avenue, Suite 800  
Phoenix, AZ 85004-4427  
(602) 417-9200

RECEIVED  
BLM AZ STATE OFFICE  
2018 AUG 20 P 12:20  
PHOENIX, ARIZONA

**Re: Maintenance Fee Payment for Lode Claims**

Please accept the following 2019 maintenance fee payment documents enclosed on behalf of the claimant, Bronco Creek Exploration, Inc., of 1815 East Winsett Street, Tucson, Arizona 85719:

- Exhibit A- List of 27 mining claims and AMC numbers to be included in this maintenance fee payment.
- Check # 3519 in the amount of \$4,185 (\$155.00 x 27 unpatented mining claims located in Pinal County, Arizona)

If there are any questions or problems, please contact me at (520) 624-4153, ccreel@broncocreek.com or at the address above. Thank you very much for your assistance.

Sincerely,

A handwritten signature in black ink, appearing to read "C. Creel".

Chris Creel  
Land Manager

#4240670

# Exhibit A

Federal Unpatented Claims

Project: Superior West

Pinal  
Arizona

Line No.	BLM Serial No.	Claim Name	County Recorder	Townshp	Range	Section
			Fee # / Doc ID #			
1	AMC441622	MFI 1	2017-007277	2S	12E	9
2	AMC441623	MFI 2	2017-007278	2S	12E	8
3	AMC441624	MFI 3	2017-007279	2S	12E	8
4	AMC441625	MFI 4	2017-007280	2S	12E	8,17
5	AMC441626	MFI 5	2017-007281	2S	12E	8,17
6	AMC441627	MFI 6	2017-007282	2S	12E	8,17
7	AMC441628	MFI 7	2017-007283	2S	12E	8,17
8	AMC441629	MFI 8	2017-007284	2S	12E	8,9,16,17
9	AMC441630	MFI 9	2017-007285	2S	12E	16
10	AMC441631	MFI 10	2017-007286	2S	12E	9,16
11	AMC441632	MFI 11	2017-007287	2S	12E	16
12	AMC441633	MFI 12	2017-007288	2S	12E	16
13	AMC441634	MFI 13	2017-007289	2S	12E	16
14	AMC441635	MFI 14	2017-007290	2S	12E	16
15	AMC441636	MFI 15	2017-007291	2S	12E	16
16	AMC441637	MFI 16	2017-007292	2S	12E	16
17	AMC441638	MFI 17	2017-007293	2S	12E	16
18	AMC441639	MFI 18	2017-007294	2S	12E	16
19	AMC441640	MFI 19	2017-007295	2S	12E	15,16
20	AMC441641	MFI 20	2017-007296	2S	12E	15,16
21	AMC441642	MFI 21	2017-007297	2S	12E	15,16
22	AMC441643	MFI 22	2017-007298	2S	12E	15,16
23	AMC441644	MFI 23	2017-007299	2S	12E	15,22
24	AMC441645	MFI 24	2017-007300	2S	12E	8,17
25	AMC441646	MFI 25	2017-007301	2S	12E	17
26	AMC441647	MFI 26	2017-007302	2S	12E	17
27	AMC441648	MFI 27	2017-007303	2S	12E	17

Total Claims 27

RECEIVED  
BLM AZ STATE OFFICE  
2018 AUG 20 P 12:50  
PHOENIX, ARIZONA



Bronco Creek Exploration Inc.  
1815 East Winsett Street  
Tucson, Arizona 85719-6547

Tel: (520) 624-4153  
Fax: (520) 624-4192  
www.broncocreek.com

After recording, return to:  
Bronco Creek Exploration, Inc.  
1815 East Winsett Street  
Tucson, AZ 85719-6547

August 5, 2018

Bureau of Land Management  
One North Central Avenue, Suite 800  
Phoenix, AZ 85004-4427  
(602) 417-9200

RECEIVED  
BLM AZ STATE OFFICE  
2018 AUG 20 P 12:50  
PHOENIX, ARIZONA

**Re: Maintenance Fee Payment for Lode Claims**

Please accept the following 2019 maintenance fee payment documents enclosed on behalf of the claimant, Bronco Creek Exploration, Inc., of 1815 East Winsett Street, Tucson, Arizona 85719:

- Exhibit A- List of 186 mining claims and AMC numbers to be included in this maintenance fee payment.
- Check # 3520 in the amount of \$28,830 (\$155.00 x 186 unpatented mining claims located in Pima County, Arizona)

If there are any questions or problems, please contact me at (520) 624-4153, ccreel@broncocreek.com or at the address above. Thank you very much for your assistance.

Sincerely,

Chris Creel  
Land Manager

# 4240670



# Exhibit A

Federal Unpatented Claims

Project: Silver Bell

Pima  
Arizona

Line No.	BLM Serial No.	Claim Name	County Recorder			Townshp	Range	Section
			Fee # / Doc ID #	Book	Page			
1	AMC373611	SB 1	20061720236	12883	553	12S	8E	6
2	AMC373612	SB 2	20061720237	12883	555	12S	8E	6
3	AMC373613	SB 3	20061720238	12883	557	12S	8E	6
4	AMC373614	SB 4	20061720239	12883	559	12S	8E	6
5	AMC373615	SB 5	20061720240	12883	561	12S	8E	6
6	AMC373616	SB 6	20061720241	12883	563	12S	8E	6
7	AMC373617	SB 7	20061720242	12883	565	12S	8E	6
8	AMC373618	SB 8	20061720243	12883	567	12S	8E	6
9	AMC373619	SB 9	20061720244	12883	569	12S	8E	6
10	AMC373620	SB 10	20061720245	12883	571	12S	8E	5,6
11	AMC373621	SB 11	20061720246, 20062500701	12883; 12961	573; 4695	12S	8E	6
12	AMC373622	SB 12	20061720247, 20062500702	12883; 12961	575; 4696	12S	8E	6
13	AMC373623	SB 13	20061720248, 20062500703	12883; 12961	577; 4697	12S	8E	6
14	AMC373624	SB 14	20061720249, 20062500704	12883; 12961	579; 4698	12S	8E	6
15	AMC373625	SB 15	20061720250, 20062500705	12883; 12961	581; 4699	12S	8E	6
16	AMC373626	SB 16	20061720251, 20062500706	12883; 12961	583; 4700	12S	8E	6
17	AMC373627	SB 17	20061720252, 20062500707	12883; 12961	585; 4701	12S	8E	6
18	AMC373628	SB 18	20061720253, 20062500708	12883; 12961	587; 4702	12S	8E	6
19	AMC373629	SB 19	20061720254, 20062500709	12883; 12961	589; 4703	12S	8E	6
20	AMC373630	SB 20	20061720255, 20062500710	12883; 12961	591; 4704	12S	8E	5,6
21	AMC373631	SB 21	20061720256, 20062500711	12883; 12961	593; 4705	12S	8E	6
22	AMC373632	SB 22	20061720257, 20062500712	12883; 12961	595; 4706	12S	8E	6
23	AMC373633	SB 23	20061720258, 20062500713	12883; 12961	597; 4707	12S	8E	6
24	AMC373634	SB 24	20061720259, 20062500714	12883; 12961	599; 4708	12S	8E	6
25	AMC373635	SB 25	20061720260, 20062500715	12883; 12961	601; 4709	12S	8E	6

RECEIVED  
 BLM AT STATE OFFICE  
 2018 AUG 20 P 12:50  
 PHOENIX, ARIZONA

Federal Unpatented Claims

Project: Silver Bell

Pima  
Arizona

Line No.	BLM Serial No.	Claim Name	County Recorder			Township	Range	Section
			Fee # / Doc ID #	Book	Page			
26	AMC373636	SB 26	20061720261, 20062500716	12883; 12961	603; 4710	12S	8E	6
27	AMC373637	SB 27	20061720262, 20062500717	12883; 12961	605; 4711	12S	8E	6
28	AMC373638	SB 28	20061720263, 20062500718	12883; 12961	607; 4712	12S	8E	6
29	AMC373639	SB 29	20061720264, 20062500719	12883; 12961	609; 4713	12S	8E	6
30	AMC373640	SB 30	20061720265, 20062500720	12883; 12961	611; 4714	12S	8E	5,6
31	AMC373641	SB 31	20061720266, 20062500721	12883; 12961	613; 4715	12S	8E	6
32	AMC373642	SB 32	20061720267, 20062500722	12883; 12961	615; 4716	12S	8E	6
33	AMC373643	SB 33	20061720268, 20062500723	12883; 12961	617; 4717	12S	8E	6
34	AMC373644	SB 34	20061720269, 20062500724	12883; 12961	619; 4718	12S	8E	6
35	AMC373645	SB 35	20061720270, 20062500725	12883; 12961	621; 4719	12S	8E	6
36	AMC373646	SB 36	20061720271, 20062500726	12883; 12961	623; 4720	12S	8E	6
37	AMC373647	SB 37	20061720272, 20062500727	12883; 12961	625; 4721	12S	8E	6
38	AMC373648	SB 38	20061720273, 20062500728	12883; 12961	627; 4722	12S	8E	6
39	AMC373649	SB 39	20061720274, 20062500729	12883; 12961	629; 4723	12S	8E	6
40	AMC373650	SB 40	20061720275, 20062500730	12883; 12961	631; 4724	12S	8E	5,6
41	AMC373651	SB 41	20061720276, 20062500731	12883; 12961	633; 4725	12S	8E	6,7
42	AMC373652	SB 42	20061720277, 20062500732	12883; 12961	635; 4726	12S	8E	6,7
43	AMC373653	SB 43	20061720278, 20062500733	12883; 12961	637; 4727	12S	8E	6,7
44	AMC373654	SB 44	20061720279, 20062500734	12883; 12961	639; 4728	12S	8E	6,7
45	AMC373655	SB 45	20061720280, 20062500735	12883; 12961	641; 4729	12S	8E	6,7
46	AMC373656	SB 46	20061720281, 20062500736	12883; 12961	643; 4730	12S	8E	6,7
47	AMC373657	SB 47	20061720282, 20062500737	12883; 12961	645; 4731	12S	8E	6,7

RECEIVED  
 BLM ATG STAFF OFFICE  
 2018 AUG 20 P 12:50  
 PIMD/ENR, ARIZONA

Federal Unpatented Claims

Project: Silver Bell

Pima  
Arizona

Line No.	BLM Serial No.	Claim Name	County Recorder			Twnshp	Range	Section
			Fee # / Doc ID #	Book	Page			
48	AMC373658	SB 48	20061720283, 20062500738	12883; 12961	647; 4732	12S	8E	6,7
49	AMC373659	SB 49	20061720284, 20062500739	12883; 12961	649; 4733	12S	8E	6,7
50	AMC373660	SB 50	20061720285, 20062500740	12883; 12961	651; 4734	12S	8E	5,6,7,8
51	AMC373661	SB 51	20061720286, 20062500741	12883; 12961	653; 4735	12S	8E	7
52	AMC373662	SB 52	20061720287, 20062500742	12883; 12961	655; 4736	12S	8E	7
53	AMC373663	SB 53	20061720288, 20062500743	12883; 12961	657; 4737	12S	8E	7
54	AMC373664	SB 54	20061720289, 20062500744	12883; 12961	659; 4738	12S	8E	7
55	AMC373665	SB 55	20061720290, 20062500745	12883; 12961	661; 4739	12S	8E	7
56	AMC373666	SB 56	20061720291, 20062500746	12883; 12961	663; 4740	12S	8E	7
57	AMC373667	SB 57	20061720292, 20062500747	12883; 12961	665; 4741	12S	8E	7
58	AMC373668	SB 58	20061720293, 20062500748	12883; 12961	667; 4742	12S	8E	7
59	AMC373669	SB 59	20061720294, 20062500749	12883; 12961	669; 4743	12S	8E	7
60	AMC373670	SB 60	20061720295, 20062500750	12883; 12961	671; 4744	12S	8E	7,8
61	AMC374429	SB 63	20061940431, 20062500751	12905; 12961	1524; 4745	12S	8E	8
62	AMC374430	SB 64	20061940432, 20062500752	12905; 12961	1526; 4746	12S	8E	8
63	AMC374431	SB 65	20061940433, 20062500753	12905; 12961	1528; 4747	12S	8E	8
64	AMC374432	SB 66	20061940434, 20062500754	12905; 12961	1530; 4748	12S	8E	8
65	AMC374433	SB 67	20061940435, 20062500755	12905; 12961	1532; 4749	12S	8E	8
66	AMC374434	SB 68	20061940436, 20062500756	12905; 12961	1534; 4750	12S	8E	7
67	AMC374435	SB 69	20061940437, 20062500757	12905; 12961	1536; 4751	12S	8E	7
68	AMC374436	SB 70	20061940438, 20062500758	12905; 12961	1538; 4752	12S	8E	7
69	AMC374437	SB 71	20061940439, 20062500759	12905; 12961	1540; 4753	12S	8E	7

RECEIVED  
 BLM ARIZONA OFFICE  
 2018 AUG 20 P 12: 50  
 PHOENIX, ARIZONA

Federal Unpatented Claims

Project: Silver Bell

Pima  
Arizona

Line No.	BLM Serial No.	Claim Name	County Recorder			Twنشp	Range	Section
			Fee # / Doc ID #	Book	Page			
70	AMC374438	SB 72	20061940440, 20062500760	12905; 12961	1542; 4754	12S	8E	7
71	AMC374439	SB 73	20061940441, 20062500761	12905; 12961	1544; 4755	12S	8E	7
72	AMC374440	SB 74	20061940442, 20062500762	12905; 12961	1546; 4756	12S	8E	7
73	AMC374441	SB 75	20061940443, 20062500763	12905; 12961	1548; 4757	12S	8E	7
74	AMC374442	SB 76	20061940444, 20062500764	12905; 12961	1550; 4758	12S	8E	7
75	AMC374443	SB 77	20061940445, 20062500765	12905; 12961	1552; 4759	12S	8E	7,8
76	AMC374444	SB 78	20061940446, 20062500766	12905; 12961	1554; 4760	12S	8E	8
77	AMC374445	SB 79	20061940447, 20062500767	12905; 12961	1556; 4761	12S	8E	8
78	AMC374446	SB 80	20061940448, 20062500768	12905; 12961	1558; 4762	12S	8E	8
79	AMC374447	SB 81	20061940449, 20062500769	12905; 12961	1560; 4763	12S	8E	8
80	AMC374448	SB 82	20061940450, 20062500770	12905; 12961	1562; 4764	12S	8E	8
81	AMC374449	SB 83	20061940451, 20062500771	12905; 12961	1564; 4765	12S	8E	8
82	AMC374450	SB 84	20061940452, 20062500772	12905; 12961	1566; 4766	12S	8E	7
83	AMC374451	SB 85	20061940453, 20062500773	12905; 12961	1568; 4767	12S	8E	7
84	AMC374452	SB 86	20061940454, 20062500774	12905; 12961	1570; 4768	12S	8E	7
85	AMC374453	SB 87	20061940455, 20062500775	12905; 12961	1572; 4769	12S	8E	7
86	AMC374454	SB 88	20061940456, 20062500776	12905; 12961	1574; 4770	12S	8E	7
87	AMC374455	SB 89	20061940457, 20062500777	12905; 12961	1576; 4771	12S	8E	7
88	AMC374456	SB 90	20061940458, 20062500778	12905; 12961	1578; 4772	12S	8E	7
89	AMC374457	SB 91	20061940459, 20062500779	12905; 12961	1580; 4773	12S	8E	7
90	AMC374458	SB 92	20061940460, 20062500780	12905; 12961	1582; 4774	12S	8E	7,8
91	AMC374459	SB 93	20061940461, 20062500781	12905; 12961	1584; 4775	12S	8E	8

RECEIVED  
 BLM AZ STATE OFFICE  
 2018 AUG 20 P 12:50  
 PHOENIX, ARIZONA

Federal Unpatented Claims

Project: Silver Bell

Pima  
Arizona

Line No.	BLM Serial No.	Claim Name	County Recorder			Township	Range	Section
			Fee # / Doc ID #	Book	Page			
92	AMC374460	SB 94	20061940462, 20062500782	12905; 12961	1586; 4776	12S	8E	8
93	AMC374461	SB 95	20061940463, 20062500783	12905; 12961	1588; 4777	12S	8E	8
94	AMC374462	SB 96	20061940464, 20062500784	12905; 12961	1590; 4778	12S	8E	8
95	AMC374463	SB 97	20061940465, 20062500785	12905; 12961	1592; 4779	12S	8E	8
96	AMC379989	SB 98	20070410581	13002	4090	12S	8E	8
97	AMC379990	SB 99	20070410582	13002	4092	12S	8E	8
98	AMC379991	SB 100	20070410583	13002	4094	12S	8E	8
99	AMC379992	SB 101	20070410584	13002	4096	12S	8E	8,9
100	AMC379993	SB 102	20070410585	13002	4098	12S	8E	8
101	AMC379994	SB 103	20070410586	13002	4100	12S	8E	8
102	AMC379995	SB 104	20070410587	13002	4102	12S	8E	8
103	AMC379996	SB 105	20070410588	13002	4104	12S	8E	8,9
104	AMC379997	SB 106	20070410589	13002	4106	12S	8E	8
105	AMC379998	SB 107	20070410590	13002	4108	12S	8E	8
106	AMC379999	SB 108	20070410591	13002	4110	12S	8E	8
107	AMC380000	SB 109	20070410592	13002	4112	12S	8E	8
108	AMC380001	SB 110	20070410593	13002	4114	12S	8E	8
109	AMC380002	SB 111	20070410594	13002	4116	12S	8E	8
110	AMC380003	SB 112	20070410595	13002	4118	12S	8E	8
111	AMC380004	SB 113	20070410596	13002	4120	12S	8E	7,18
112	AMC380005	SB 114	20070410597	13002	4122	12S	8E	7,18
113	AMC380006	SB 115	20070410598	13002	4124	12S	8E	7,18
114	AMC380007	SB 116	20070410599	13002	4126	12S	8E	7,18
115	AMC380008	SB 117	20070410600	13002	4128	12S	8E	7,18
116	AMC380009	SB 118	20070410601	13002	4130	12S	8E	7,18
117	AMC380010	SB 119	20070410602	13002	4132	12S	8E	7,8,17,18
118	AMC380011	SB 120	20070410603	13002	4134	12S	8E	8,17
119	AMC380012	SB 121	20070410604	13002	4136	12S	8E	8,17
120	AMC380013	SB 122	20070410605	13002	4138	12S	8E	8,17
121	AMC380014	SB 123	20070410606	13002	4140	12S	8E	8,17
122	AMC380015	SB 124	20070410607	13002	4142	12S	8E	8,17
123	AMC380016	SB 125	20070410608	13002	4144	12S	8E	8,17
124	AMC380017	SB 126	20070410609	13002	4146	12S	8E	8,17
125	AMC380018	SB 127	20070410610	13002	4148	12S	8E	8,17
126	AMC380019	SB 128	20070410611	13002	4150	12S	8E	8,9,16,17
127	AMC380020	SB 129	20070410612	13002	4152	12S	8E	18
128	AMC380021	SB 130	20070410613	13002	4154	12S	8E	18
129	AMC380022	SB 131	20070410614	13002	4156	12S	8E	18

2018 AUG 20 P 12: 51  
 PHOENIX, ARIZONA  
 BLM



Federal Unpatented Claims

Project: Silver Bell

Pima  
Arizona

Line No.	BLM Serial No.	Claim Name	County Recorder			Twnshp	Range	Section
			Fee # / Doc ID #	Book	Page			
130	AMC380023	SB 132	20070410615	13002	4158	12S	8E	18
131	AMC380024	SB 133	20070410616	13002	4160	12S	8E	18
132	AMC380025	SB 134	20070410617	13002	4162	12S	8E	18
133	AMC380026	SB 135	20070410618	13002	4164	12S	8E	18
134	AMC380027	SB 136	20070410619	13002	4166	12S	8E	18
135	AMC380028	SB 137	20070410620	13002	4168	12S	8E	18
136	AMC380029	SB 138	20070410621	13002	4170	12S	8E	17,18
137	AMC380030	SB 139	20070410622	13002	4172	12S	8E	17
138	AMC380031	SB 140	20070410623	13002	4174	12S	8E	17
139	AMC380032	SB 141	20070410624	13002	4176	12S	8E	17
140	AMC380033	SB 142	20070410625	13002	4178	12S	8E	17
141	AMC380034	SB 143	20070410626	13002	4180	12S	8E	17
142	AMC380035	SB 144	20070410627	13002	4182	12S	8E	17
143	AMC380036	SB 145	20070410628	13002	4184	12S	8E	17
144	AMC380037	SB 146	20070410629	13002	4186	12S	8E	17
145	AMC380038	SB 147	20070410630	13002	4188	12S	8E	16,17
146	AMC383484	SB 148	20071111152	13072	5873	12S	8E	9
147	AMC383485	SB 149	20071111153	13072	5875	12S	8E	9
148	AMC383487	SB 151	20071111155	13072	5879	12S	8E	9
149	AMC383488	SB 152	20071111156	13072	5881	12S	8E	9
150	AMC383489	SB 153	20071111157	13072	5883	12S	8E	9
151	AMC383490	SB 154	20071111158	13072	5885	12S	8E	9
152	AMC383491	SB 155	20071111159	13072	5887	12S	8E	9
153	AMC383493	SB 157	20071111161	13072	5891	12S	8E	9
154	AMC383494	SB 158	20071111162	13072	5893	12S	8E	9,10
155	AMC383495	SB 159	20071111163, 20080040970, 20133040925	13072; 13216	5895; 3269	12S	8E	10
156	AMC383496	SB 160	20071111164, 20080040971, 20133040926	13072; 13216	5897; 3271	12S	8E	10
157	AMC383497	SB 161	20071111165	13072	5899	12S	8E	9
158	AMC383498	SB 162	20071111166	13072	5901	12S	8E	9
159	AMC383499	SB 163	20071111167	13072	5903	12S	8E	9
160	AMC383500	SB 164	20071111168	13072	5905	12S	8E	9
161	AMC383501	SB 165	20071111169	13072	5907	12S	8E	9
162	AMC383502	SB 166	20071111170	13072	5909	12S	8E	9
163	AMC383503	SB 167	20071111171	13072	5911	12S	8E	9
164	AMC383504	SB 168	20071111172	13072	5913	12S	8E	9
165	AMC383505	SB 169	20071111173	13072	5915	12S	8E	9,10
166	AMC383506	SB 170	20071111174	13072	5917	12S	8E	10
167	AMC383507	SB 171	20071111175	13072	5919	12S	8E	10

2018 AUG 20 P 12:51  
 RECEIVED  
 BLM AZ STATE OFFICE  
 PHOENIX, ARIZONA

Federal Unpatented Claims

Project: Silver Bell

Pima  
Arizona

Line No.	BLM Serial No.	Claim Name	County Recorder			Townshp	Range	Section
			Fee # / Doc ID #	Book	Page			
168	AMC383508	SB 172	20071111176	13072	5921	12S	8E	10
169	AMC383509	SB 173	20071111177	13072	5923	12S	8E	10
170	AMC383510	SB 174	20071111178	13072	5925	12S	8E	10
171	AMC383511	SB 175	20071111179	13072	5927	12S	8E	10,15
172	AMC383512	SB 176	20071111180	13072	5929	12S	8E	10,15
173	AMC383513	SB 177	20071111181	13072	5931	12S	8E	10,15
174	AMC383514	SB 178	20071111182	13072	5933	12S	8E	10,15
175	AMC383515	SB 179	20071111183	13072	5935	12S	8E	10,15
176	AMC383516	SB 180	20071111184	13072	5937	12S	8E	10,15
177	AMC383517	SB 182	20071111185	13072	5939	12S	8E	15
178	AMC383518	SB 183	20071111186	13072	5941	12S	8E	15
179	AMC383519	SB 184	20071111187	13072	5943	12S	8E	15
180	AMC383520	SB 185	20071111188	13072	5945	12S	8E	15
181	AMC383521	SB 186	20071111189	13072	5947	12S	8E	15
182	AMC383522	SB 187	20071111190	13072	5949	12S	8E	15
183	AMC383523	SB 188	20071111191	13072	5951	12S	8E	15
184	AMC383524	SB 189	20071111192	13072	5953	12S	8E	15
185	AMC383525	SB 190	20071111193	13072	5955	12S	8E	15
186	AMC383526	SB 191	20071111194	13072	5957	12S	8E	15

Total Claims 186

RECEIVED  
BLM AZ STATE OFFICE  
2018 AUG 20 P 12:51  
PHOENIX, ARIZONA



Bronco Creek Exploration Inc.  
1815 East Winsett Street  
Tucson, Arizona 85719-6547

Tel: (520) 624-4153  
Fax: (520) 624-4192  
www.broncocreek.com

After recording, return to:  
Bronco Creek Exploration, Inc.  
1815 East Winsett Street  
Tucson, AZ 85719-6547

August 6, 2018

Bureau of Land Management  
One North Central Avenue, Suite 800  
Phoenix, AZ 85004-4427  
(602) 417-9200

RECEIVED  
BLM AZ STATE OFFICE  
2018 AUG 20 P 12:51  
PHOENIX, ARIZONA

**Re: Maintenance Fee Payment for Lode Claims**

Please accept the following 2019 maintenance fee payment documents enclosed on behalf of the claimant, Bronco Creek Exploration, Inc., of 1815 East Winsett Street, Tucson, Arizona 85719:

- Exhibit A- List of 1 mining claims and AMC number to be included in this maintenance fee payment.
- Check # 352/ in the amount of \$155 (\$155.00 x 1 unpatented mining claims located in Santa Cruz County, Arizona)

If there are any questions or problems, please contact me at (520) 624-4153, [ccreel@broncocreek.com](mailto:ccreel@broncocreek.com) or at the address above. Thank you very much for your assistance.

Sincerely,

Chris Creel  
Land Manager

#4240670

# Exhibit A

Federal Unpatented Claims

Project: PAT 17

Santa Cruz  
Arizona

Line No.	BLM Serial No.	Claim Name	County Recorder		Townshp	Range	Section
			Fee # / Doc ID #				
1	AMC451946	PAT 17	2018-05008		23S	16E	5

Total Claims 1

RECEIVED  
BLM AZ STATE OFFICE  
2018 AUG 20 P 12:51  
PHOENIX, ARIZONA



Bronco Creek Exploration Inc.  
1815 East Winsett Street  
Tucson, Arizona 85719-6547

Tel: (520) 624-4153  
Fax: (520) 624-4192  
www.broncocreek.com

After recording, return to:  
Bronco Creek Exploration, Inc.  
1815 East Winsett Street  
Tucson, AZ 85719-6547

August 5, 2018

Bureau of Land Management  
One North Central Avenue, Suite 800  
Phoenix, AZ 85004-4427  
(602) 417-9200

RECEIVED  
BLM AZ STATE OFFICE  
2018 AUG 20 P 12: 51  
PHOENIX, ARIZONA

**Re: Maintenance Fee Payment for Lode Claims**

Please accept the following 2019 maintenance fee payment documents enclosed on behalf of the claimant, Bronco Creek Exploration, Inc., of 1815 East Winsett Street, Tucson, Arizona 85719:

- Exhibit A- List of 54 mining claims and AMC numbers to be included in this maintenance fee payment.
- Check # 3522 in the amount of \$8,370 (\$155.00 x 54 unpatented mining claims located in La Paz County, Arizona)

If there are any questions or problems, please contact me at (520) 624-4153, ccreel@broncocreek.com or at the address above. Thank you very much for your assistance.

Sincerely,

Chris Creel  
Land Manager

# 4240670



# Exhibit A

Federal Unpatented Claims

Project: Aguila de Cobre

La Paz  
Arizona

Line No.	BLM Serial No.	Claim Name	County Recorder	Township	Range	Section
			Fee # / Doc ID #			
1	AMC430099	AC 21	2014-03934	2N	11W	14
2	AMC430100	AC 22	2014-03935	2N	11W	14
3	AMC430101	AC 23	2014-03936	2N	11W	14
4	AMC430102	AC 24	2014-03937	2N	11W	14
5	AMC430103	AC 25	2014-03938	2N	11W	13,14
6	AMC430104	AC 26	2014-03939	2N	11W	14
7	AMC430105	AC 27	2014-03940	2N	11W	14,23
8	AMC430106	AC 28	2014-03941	2N	11W	14,23
9	AMC430107	AC 29	2014-03942	2N	11W	14,23
10	AMC430108	AC 30	2014-03943	2N	11W	14,23
11	AMC430109	AC 31	2014-03944	2N	11W	14,23
12	AMC430110	AC 32	2014-03945	2N	11W	14,23
13	AMC430111	AC 33	2014-03946	2N	11W	23
14	AMC430112	AC 34	2014-03947	2N	11W	23
15	AMC430113	AC 35	2014-03948	2N	11W	23
16	AMC430114	AC 36	2014-03949	2N	11W	22,23
17	AMC430115	AC 37	2014-03950	2N	11W	23
18	AMC430116	AC 38	2014-03951	2N	11W	23
19	AMC430117	AC 39	2014-03952	2N	11W	23
20	AMC430118	AC 40	2014-03953	2N	11W	23
21	AMC434176	CE176	2015-03544	2N	11W	14
22	AMC434177	CE177	2015-03545	2N	11W	14
23	AMC434178	CE178	2015-03546	2N	11W	14
24	AMC434179	CE179	2015-03547	2N	11W	14
25	AMC434180	CE180	2015-03548	2N	11W	13,14
26	AMC434181	CE181	2015-03549	2N	11W	13,14
27	AMC434182	CE182	2015-03550	2N	11W	13
28	AMC434183	CE183	2015-03551	2N	11W	13
29	AMC434184	CE184	2015-03552	2N	11W	13
30	AMC434219	CE219	2015-03587	2N	11W	14
31	AMC434220	CE220	2015-03588	2N	11W	13,14,23
32	AMC434221	CE221	2015-03589	2N	11W	13,14,23,24
33	AMC434222	CE222	2015-03590	2N	11W	13,24
34	AMC434257	CE257	2015-03625	2N	11W	14
35	AMC434258	CE258	2015-03626	2N	11W	14,23
36	AMC434259	CE259	2015-03627	2N	11W	23,24
37	AMC434260	CE260	2015-03628	2N	11W	23,24
38	AMC434295	CE295	2015-03663	2N	11W	14,15,22,23
39	AMC434296	CE296	2015-03664	2N	11W	23
40	AMC434297	CE297	2015-03665	2N	11W	23

PHOENIX, ARIZONA

RECEIVED  
BLM AZ STATE OFFICE

Federal Unpatented Claims

Project: Aguila de Cobre

La Paz  
Arizona

Line No.	BLM Serial No.	Claim Name	County Recorder	Twنشp	Range	Section
			Fee # / Doc ID #			
41	AMC434298	CE298	2015-03666	2N	11W	23
42	AMC434326	CE326	2015-03694	2N	11W	22,23
43	AMC434327	CE327	2015-03695	2N	11W	23
44	AMC434328	CE328	2015-03696	2N	11W	23
45	AMC434329	CE329	2015-03697	2N	11W	23
46	AMC434359	CE359	2015-03727	2N	11W	22
47	AMC434360	CE360	2015-03728	2N	11W	22,23
48	AMC434361	CE361	2015-03729	2N	11W	22,23
49	AMC434362	CE362	2015-03730	2N	11W	22,23
50	AMC434363	CE363	2015-03731	2N	11W	23
51	AMC434364	CE364	2015-03732	2N	11W	23
52	AMC434365	CE365	2015-03733	2N	11W	23
53	AMC434366	CE366	2015-03734	2N	11W	23,26
54	AMC434367	CE367	2015-03735	2N	11W	23,26

Total Claims 54

RECEIVED  
 BLM AT STAFF OFFICE  
 2018 AUG 20 P 12:52  
 PHOENIX, ARIZONA

**United States Department of the Interior  
Bureau of Land Management**

DIV OF LANDS, MINRLS & ENERGY

ONE N CENTRAL AVE

PHOENIX, AZ 85004 -4427

Phone: 602-417-9200

Receipt

No: 4240670

<b>Transaction #:</b> 4356081	
<b>Date of Transaction:</b> 08/21/2018	
<b>CUSTOMER:</b>	
BRONCO CREEK EXPLORATION INC. 1815 E WINSETT ST TUCSON, AZ 85719-6547 US	

LINE #	QTY	DESCRIPTION	REMARKS	UNIT PRICE	TOTAL
1	1.00	LOCATABLE MINERALS / MINING CLAIMS-NOT NEW-UNADJUD, ONE AUTH NO. ONLY / MINING CLAIM MONEY RECEIVED <b>CASES:</b> AMC426866/\$223975.00	MAINT 2019/1445	- n/a -	223975.00
<b>TOTAL:</b>					<b>\$223,975.00</b>

PAYMENT INFORMATION					
1	AMOUNT:	4185.00	POSTMARKED:	N/A	
	TYPE:	CHECK	RECEIVED:	08/20/2018	
	CHECK NO:	3519			
	NAME:	BRONCO CREEK EXPLORATION INC. 1815 E WINSETT ST TUCSON AZ 85719-6547 US			
2	AMOUNT:	28830.00	POSTMARKED:	N/A	
	TYPE:	CHECK	RECEIVED:	08/20/2018	
	CHECK NO:	3520			
	NAME:	BRONCO CREEK EXPLORATION INC. 1815 E WINSETT ST TUCSON AZ 85719-6547 US			
3	AMOUNT:	155.00	POSTMARKED:	N/A	
	TYPE:	CHECK	RECEIVED:	08/20/2018	
	CHECK NO:	3521			
	NAME:				

	BRONCO CREEK EXPLORATION INC. 1815 E WINSETT ST TUCSON AZ 85719-6547 US		
4	AMOUNT:	8370.00	POSTMARKED: N/A
	TYPE:	CHECK	RECEIVED: 08/20/2018
	CHECK NO:	3522	
	NAME:	BRONCO CREEK EXPLORATION INC. 1815 E WINSETT ST TUCSON AZ 85719-6547 US	
5	AMOUNT:	18910.00	POSTMARKED: N/A
	TYPE:	CHECK	RECEIVED: 08/20/2018
	CHECK NO:	3523	
	NAME:	BRONCO CREEK EXPLORATION INC. 1815 E WINSETT ST TUCSON AZ 85719-6547 US	
6	AMOUNT:	24800.00	POSTMARKED: N/A
	TYPE:	CHECK	RECEIVED: 08/20/2018
	CHECK NO:	3524	
	NAME:	BRONCO CREEK EXPLORATION INC. 1815 E WINSETT ST TUCSON AZ 85719-6547 US	
7	AMOUNT:	23405.00	POSTMARKED: N/A
	TYPE:	CHECK	RECEIVED: 08/20/2018
	CHECK NO:	3525	
	NAME:	BRONCO CREEK EXPLORATION INC. 1815 E WINSETT ST TUCSON AZ 85719-6547 US	
8	AMOUNT:	47275.00	POSTMARKED: N/A
	TYPE:	CHECK	RECEIVED: 08/20/2018
	CHECK NO:	3526	
	NAME:	BRONCO CREEK EXPLORATION INC. 1815 E WINSETT ST TUCSON AZ 85719-6547 US	
9	AMOUNT:	29760.00	POSTMARKED: N/A
	TYPE:	CHECK	RECEIVED: 08/20/2018
	CHECK NO:	3527	
	NAME:	BRONCO CREEK EXPLORATION INC. 1815 E WINSETT ST TUCSON AZ 85719-6547 US	
10	AMOUNT:	14725.00	POSTMARKED: N/A
	TYPE:	CHECK	RECEIVED: 08/20/2018
	CHECK NO:	3528	



	NAME:	BRONCO CREEK EXPLORATION INC. 1815 E WINSETT ST TUCSON AZ 85719-6547 US	
11	AMOUNT:	23560.00	POSTMARKED: N/A
	TYPE:	CHECK	RECEIVED: 08/20/2018
	CHECK NO:	3529	
	NAME:	BRONCO CREEK EXPLORATION INC. 1815 E WINSETT ST TUCSON AZ 85719-6547 US	

REMARKS

This receipt was generated by the automated BLM Collections and Billing System and is a paper representation of a portion of the official electronic record contained therein.



Express

earth smart

RECEIVED  
BLM AZ STATE  
FedEx carbon-neutral  
envelope shipping

2018 AUG 20 P 12:11A

PHOENIX, ARIZONA

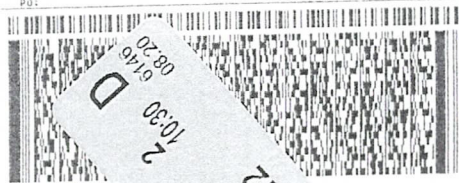
ORIGIN ID: PGAA (520) 624-4153  
ANDREW FAULKNER  
1815 E WINNETT ST  
TUCSON, AZ 85719  
UNITED STATES US

SHIP DATE: 17AUG18  
ACTWT: 0.70 LB  
CND: 6992179/SSF01904

BILL THIRD PARTY

TO  
BUREAU OF LAND MANAGMENT  
ONE NORTH CENTRAL AVENUE  
SUITE 800  
PHOENIX AZ 85004

(602) 417-9200 REF: DEPT:



FedEx  
Express



TRK# 7823 596b  
0201

Handwritten: 276, 10:30 AM, ST 6.2

MON - 20 AUG 10:30A  
PRIORITY OVERNIGHT

**XH ZSYA**

85004  
AZ-US PHX



Form 1 12/07-08/2018 (001) (01/18)

**NOTICE!!**

**These documents have been scanned!**

**Do not place un-scanned documents beneath this notice!**

**Do not remove this notice from this file!**

GPO Jacket No. 560-102  
Print Order 61540  
Rise Business Services, LLC  
Job=AZ15 7/11/2019



Box Number= AZ15154



Claim Begin-End: AMC451946-AMC451946

**5 Miscellaneous**



AZ15154-5

AMC451761-AMC452292



Bronco Creek Exploration Inc.  
1815 East Winsett Street  
Tucson, Arizona 85719-6547

Tel: (520) 624-4153  
Fax: (520) 624-4192  
www.broncocreek.com

July 23, 2018

After recording, return to:  
Bronco Creek Exploration, Inc.  
1815 East Winsett Street  
Tucson, AZ 85719-6547

Bureau of Land Management  
One North Central Avenue, Suite 800  
Phoenix, AZ 85004-4427  
(602) 417-9200

RECEIVED  
BLM AZ STATE OFFICE  
2018 JUL 30 P 2:02  
PHOENIX, ARIZONA

**Re: Location Notice Recordation**

Please accept the following location notice for 1 unpatented lode claim enclosed on behalf of the claimant, Bronco Creek Exploration, Inc., of 1815 East Winsett Street, Tucson, Arizona 85719:

- 1 location notice for PAT 17 unpatented lode claim
- Check # 3503 in the amount of \$212 for 1 location notice and a map.

If there are any questions or problems, please contact me at (520) 624-4153, [ccreel@broncocreek.com](mailto:ccreel@broncocreek.com) or at the address above. Thank you very much for your assistance.

Sincerely,

Chris Creel  
Land Manager

AMC151946



**NOTICE!!**

**These documents have been scanned!**

**Do not place un-scanned documents beneath this notice!**

**Do not remove this notice from this file!**

GPO Jacket No. 560-102  
Print Order 61540  
Rise Business Services, LLC  
Job=AZ15 7/11/2019



Box Number= AZ15154



Claim Begin-End: AMC451946-AMC451946

**6 Location Notices-Amendments and Supporting Documents**



AZ15154-5

AMC451761-AMC452292

**MINING CLAIM STATUS REPORT**

Data Entered: 8/2/18 Ram

MTP Checked By: 8/2/18 Ram

GEO Checked By: 8/2/18 Ram

LEAD SERIAL NUMBER: AMC 451946 thru AMC \_\_\_\_\_

**NUMBER OF CLAIMS & TYPE:**

1 LODE  
\_\_\_\_ PLACER  
\_\_\_\_ ASSOCIATION PLACER  
\_\_\_\_ MILL SITE  
\_\_\_\_ TUNNEL SITE

**CHARGES:**

Processing Fee @ \$20 = \$ 20  
Location Fee @ \$37 = \$ 37  
Maintenance Fee @ \$155 = \$ 155  
Add'l Maint Fee for Assoc Placer = \$ \_\_\_\_\_  
**SUBTOTAL** \$ \_\_\_\_\_  
Other Fees \$ \_\_\_\_\_  
Other Fees \$ \_\_\_\_\_  
**TOTAL** \$ 212

TOTAL ACREAGE: \_\_\_\_\_ Per Claim  
(Placer Only)

NUMBER OF LOCATORS: \_\_\_\_\_

DOCUMENTS RECEIVED VIA: Over-the-Counter [ ] Mail [  ] TIMELY FILED: Yes [  ] No [ ]

LEGAL DESCRIPTION: T 235<sup>N</sup> R 16<sup>W</sup> SEC 5  
T \_\_\_\_\_ R \_\_\_\_\_ SEC \_\_\_\_\_  
T \_\_\_\_\_ R \_\_\_\_\_ SEC \_\_\_\_\_  
T \_\_\_\_\_ R \_\_\_\_\_ SEC \_\_\_\_\_  
T \_\_\_\_\_ R \_\_\_\_\_ SEC \_\_\_\_\_

BLM [ ] FOREST SERVICE [ ] \_\_\_\_\_ SUBJ TO PL 359: Yes [ ] No [ ]  
WILDERNESS AREA [ ] \_\_\_\_\_

SPLIT ESTATE: N/A [ ] SX [ ] PX [ ] OTHER [ ] \_\_\_\_\_  
SRHA [ ] Was proper Notice filed if located on SHRA Land? Yes [ ] No [ ]

RECONVEYED MINERALS ON BLM LAND REQUIRE OPENING ORDER FROM 1944 TO 1993:  
Open to Entry On \_\_\_\_\_ N/A [ ]

COMMENTS/STATUS: VOID [ ] PARTIALLY VOID [ ] PVT MINERALS [ ] WITHDRAWN LANDS [ ]  
OTHER [ ] \_\_\_\_\_  
\_\_\_\_\_  
\_\_\_\_\_

AMC 451946

[ ] Claimant acknowledges that portions of the following claim(s) site(s) may be void or voidable.

Printed Name of Claimant \_\_\_\_\_ Signature of Claimant \_\_\_\_\_

\*\*\*\*\*FINAL ADJUDICATION\*\*\*\*\*

DATE \_\_\_\_\_ INITIALS \_\_\_\_\_



When recorded, return to.

Bronco Creek Exploration, Inc.  
1815 E. Winsett St.  
Tucson, AZ 85719

**LOCATION NOTICE FOR  
LODE MINING CLAIM**

NOTICE IS HEREBY GIVEN that the **PAT 17**  
lode mining claim has been located by:  
**Bronco Creek Exploration, Inc.**  
**1815 E. Winsett St., Tucson, Arizona 85719.**

The general course of this claim is **east-west** and it is situated in **Santa Cruz** County, Arizona. This claim is **600** feet in width and **1,500** feet in length. This claim runs from the location monument on which this location notice is posted approximately **1,200** feet in an **east** direction to the **east** end line and **300** feet in a **west** direction to the **west** end line. This claim is marked by six monuments, one at each corner and one at the center of each end line of the claim.

The location monument on which this notice is posted is situated within Section **5**, Township **23S**, Range **16E**, Gila Salt River Base and Meridian, Arizona and this claim encompasses portions of the following quarter section(s), section(s), Township(s) and Range(s):

**NW ¼ Sec. 5, T 23N, R 16W**

Gila Salt River Base and Meridian, Arizona.

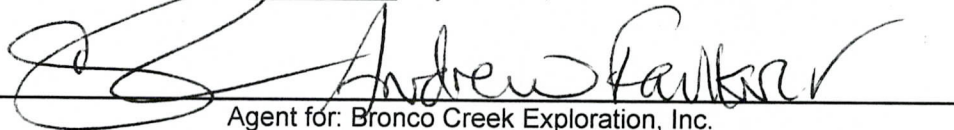
The locality of this claim with reference to some natural object or permanent monument and additional information (if any) concerning its locality are as follows: The northwest corner of the claim is approximately:

**1,075** feet **east** and **7,421** feet **south** of the northwest section marker of Sec. 32, T 22S, R 16E.

The information above is depicted on attached map.

DATED AND POSTED on the ground this 12 day of June, 2018.

LOCATOR (s) \_\_\_\_\_

  
Agent for: Bronco Creek Exploration, Inc.

RECEIVED  
BLM AZ STATE OFFICE  
2018 JUL 30 P 2:02  
PHOENIX, ARIZONA

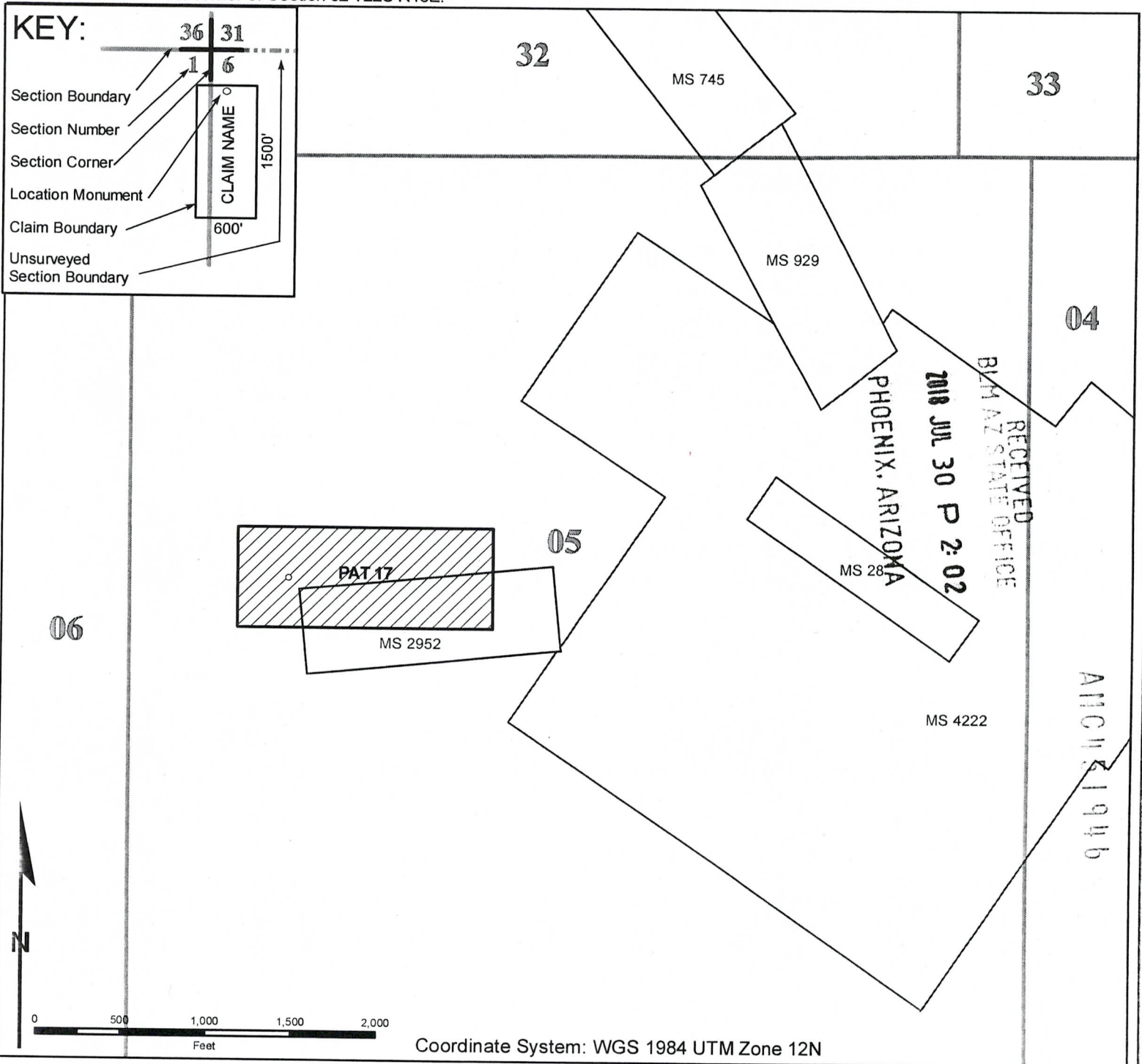
AMC151946

# Lode Mining Claim Map

## Map of the PAT 17 Lode Claim

Map prepared from an actual field survey of said Lode Claim and attached to and hereby made a part of the Location Notice

1. Name and address of Locator of Claim: Bronco Creek Exploration, Inc. 1815 E Winsett St., Tucson, AZ 85719
2. The lode mining claim is located in section(s) 5, T 23S, R 16E, Gila and Salt River Base and Meridian, Santa Cruz County, Arizona.
3. The corner, center-line, and location monuments are made up of 2" x 2" x 5' wooden posts marked with metal tags.
4. All claims 1500' long and 600' wide unless otherwise noted on this map and corresponding location notice. No claim is made to any minerals not open to entry within the claim boundary and all attempts were made to place monuments on boundary lines without entry or location on fee land..
5. The Southwest corner of the claim with reference to a permanent monument is: 7,421 feet north and 1,075 feet west to the Northwest corner of Section 32 T22S R16E.



Input Parameters for Geographic Report with Land

System Id = CR

Admin State = AZ

Geo State =

Casetype Begins With

Case Disp Txt = AUTHORIZED, CANCELLED, EXPIRED, PENDING, REJECTED, VOID, WITHDRAWN

Mer Twp Rng =

Section =

Mtrs = 14 0230N 0160W 005, 14 0230N 0160W 999

Commodity =

Commodity Txt =

Pending Org =

Pend Org Decode =

Total Rows Returned: 0





Bronco Creek Exploration  
1815 E. Winsett St  
Tucson, AZ 85719

RECEIVED  
BLM AZ STATE OFFICE

2018 JUL 30 P 2:02

PHOENIX, ARIZONA



US POSTAGE

\$01.21<sup>9</sup>

First-Class

Mailed From 85719

07/25/2018

032A 0061847880

Bureau of Land Management  
One North Central Avenue, Suite 800  
Phoenix, AZ 85004-4427